

Luzula celata

COMMON NAME

dwarf woodrush

SYNONYMS

None

FAMILY

Juncaceae

AUTHORITY

Luzula celata Edgar

FLORA CATEGORY

Vascular – Native

ENDEMIC TAXON

Yes

ENDEMIC GENUS

No

ENDEMIC FAMILY

No

STRUCTURAL CLASS

Rushes & Allied Plants

NVS CODE

LUZCEL

CHROMOSOME NUMBER

2n = 12

CURRENT CONSERVATION STATUS

2017 | At Risk – Declining | Qualifiers: DP, RR

PREVIOUS CONSERVATION STATUSES

2012 | At Risk – Declining | Qualifiers: RR

2009 | At Risk – Declining

2004 | Serious Decline

DISTRIBUTION

Endemic. South Island, Stewart Island/Rakiura. In the South Island found east of the main divide from Marlborough to Southland.

HABITAT

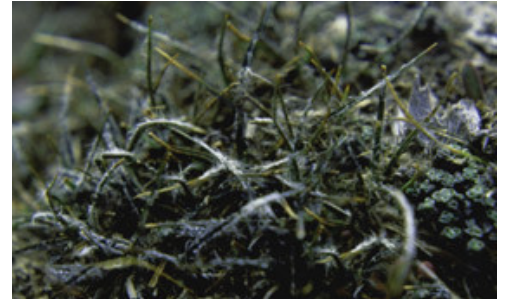
Coastal to montane. Usually in shingly ground, sandy hollows, river terraces, tarn margins, often found growing within *Raoulia* mats.

DETAILED DESCRIPTION

An inconspicuous, creeping woodrush, forming grey-green to brownish cushion-like tufts, usually less than 4cm diameter. Sometime half buried in sand, so that only leaf tips and flowers are visible. Leaves 1-3cm long, 0.5-1mm wide, folded inwards towards base, tips pointed; margins clad in long, thickly clustered, soft white hairs. Flowering stems much shorter than leaves, scarcely elongating as fruit matures. Flowers 2mm long, 6-16 in a single cluster, with minimal stalk.

SIMILAR TAXA

Luzula ulophylla. *Luzula celata* has hairy leaf margins and flower hidden amongst leaves. *Luzula ulophylla* has woolly hairs on back of leaves as well as margins, and flowering stems much taller than its leaves.



Luzula celata. Photographer: Cathy Jones, Licence: CC BY.



Photo of habitat. Photographer: Cathy Jones, Licence: CC BY.

FLOWERING

October–December

FLOWER COLOURS

Brown, White

FRUITING

December–April (but seedheads long persistent)

PROPAGATION TECHNIQUE

Easily grown from fresh seed and division of whole plants.

THREATS

The main threat throughout this species range is loss of habitat, caused by land development, weed invasion and general habitat degradation, especially erosion. Overstocking of paddocks containing this species has been a problem in some locations.

ETYMOLOGY

luzula: Latinized form of the Italian vernacular name (lucciola) for this plant

celata: Hidden

WHERE TO BUY

Not commercially available.

ATTRIBUTION

Fact Sheet by P.J. de Lange (1 September 2003). Description based on Moore & Edgar (1970).

REFERENCES AND FURTHER READING

Moore, L. B.; Edgar, E. 1970: *Flora of New Zealand. Volume II*. Wellington, Government Printer. 354 p.

NZPCN FACT SHEET CITATION

Please cite as: de Lange, P.J. (Year at time of access): *Luzula celata* Fact Sheet (content continuously updated).

New Zealand Plant Conservation Network. <https://www.nzpcn.org.nz/flora/species/luzula-celata/> (Date website was queried)

MORE INFORMATION

<https://www.nzpcn.org.nz/flora/species/luzula-celata/>