

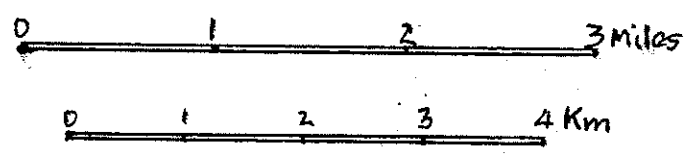
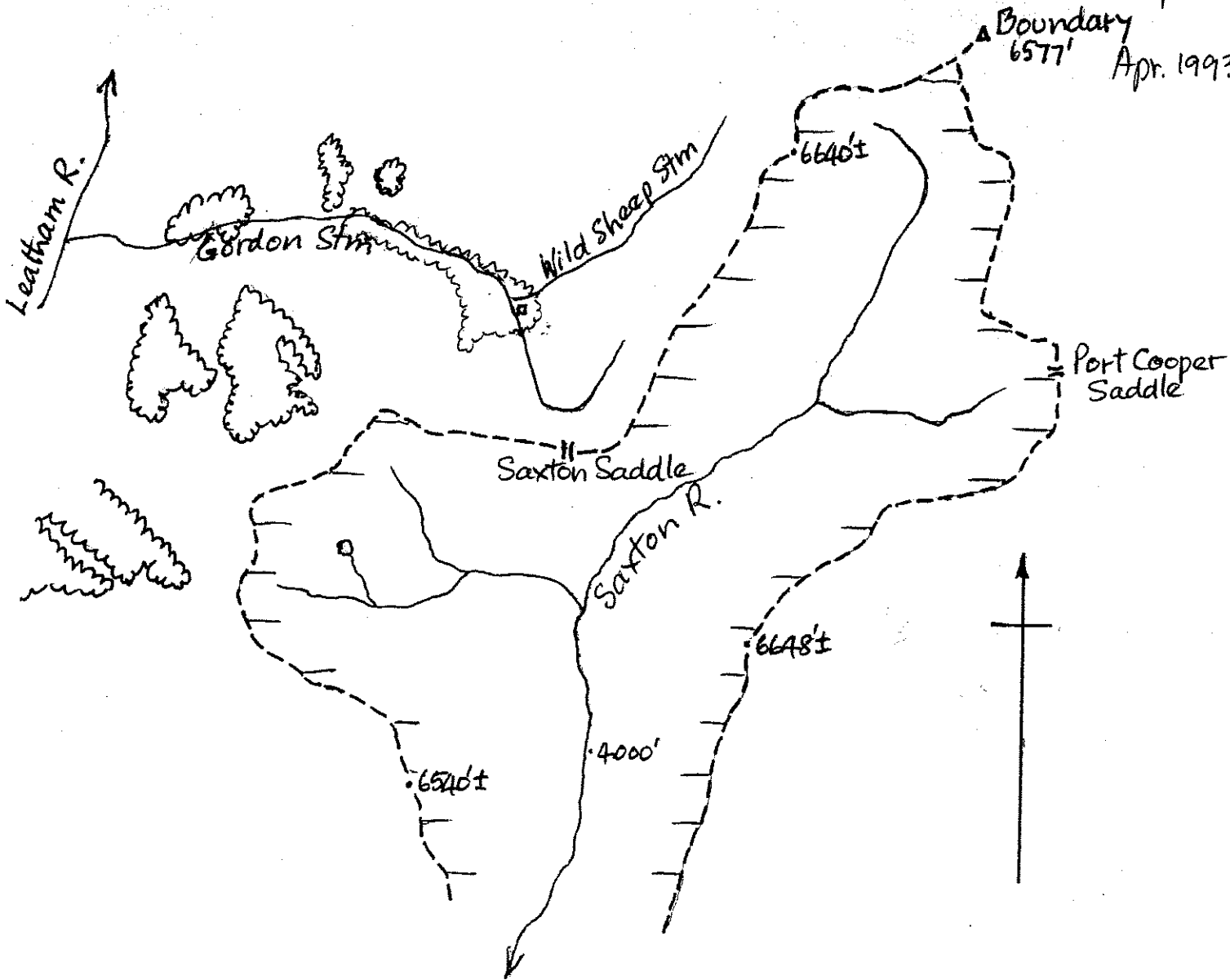
INDIGENOUS HIGHER PLANTS (LYCOPODS, QUILLWORTS, FERNS, GYMNOSPERMS, FLOWERING PLANTS) OF UPPER SAXTON R. CATCHMENT, MARLBOROUGH, 4000-6650 FT (1225-2025 M).

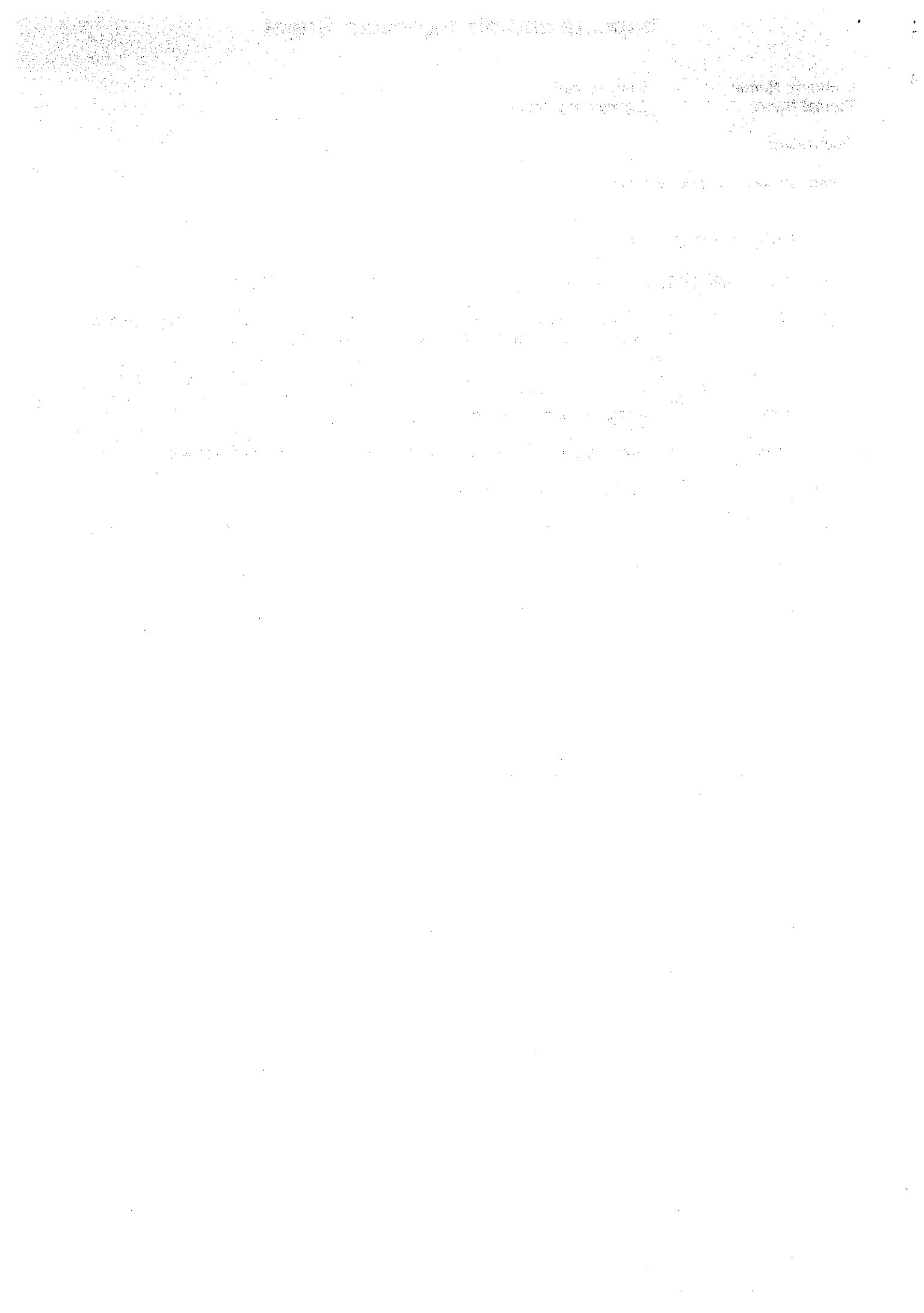
Highest point: 6648± ft, grid ref. S34 564458

A.P. Druce, Wellington, May 1984  
(revised Oct. 1985, Apr. 1986, July 1987, Sept. 1990, May 1991)

(Based on visit January 1984; additions by B.P.J. Molloy, 1987)

July 1992  
Apr. 1993





(unc) - uncommon

**GYMNOSPERM TREES AND SHRUBS**[*Halocarpus bidwillii* - subfossil wood]*Phyllocladus alpinus* s.s.*Podocarpus nivalis***DICOT TREES AND SHRUBS***Aristotelia fruticosa* var.*Brachyglottis cassinioides**B. montoi* var. *montoi**Carmichaelia* sp. (subgenus  
*Carmichaelia*)*Cassinia vauvilliersii**Coprosma atropurpurea**C. cheesemanii* s.s.*C. ciliata* ssp. (unc)*C. perpusilla* ssp. *perpusilla**C. propinqua* ssp. *propinqua**C. sp.* (unnamed; aff. *C. pseudocuneata*) (low-growing shrubs with small, thick, arcuate lvs) (unc)*Discaria tomatou**Dracophyllum pronum**D. uniflorum**D. pronum* X *D. uniflorum**Gaultheria crassa**G. sp.* (unnamed; included in *G. depressa*, as var. *novae-zelandiae*, by Franklin 1962)*Hebe anomala**H. carnosula**H. cheesemanii**H. decumbens**H. epacridea* var. *epacridea**H. haastii* var. (aff. var. *humilis*)*H. lycopodioides**H. maerantha* var. *brachyphylla**H. pauciramosa**H. pimeleoides* s.s. (incl. *H. p.* var. *minor*)*H. traversii**H. tumida**H. venustula* (incl. *H. brachysiphon*)*H. sp. (i)* (unnamed; included in *H. taoulii*, as var. *pentasepala*, by Moore 1961)*H. sp. (ii)* (unnamed; aff. *H. rigidula*) (lvs glaucous beneath, conspicuously boat-shaped, widest above mid-point)*Helichtysum coralloides**H. depressum**H. intermedium* var.*H. parvifolium**H. coralloides* X *H. parvifolium**H. depressum* X *H. parvifolium**Hoheria lyallii* var. *lyallii**Kunzea ericoides* agg.*Leptospermum scoparium**Leucopogon fraseri* s.s.*L. suaveolens* (incl. *Cyathodes colensoi*)*L. sp.* (unnamed; included in *L. fraseri*, as var. *muscosus*, by Simpson 1945)

*Myrsine nummularia*  
*Olearia cymbifolia* var. *cymbifolia*  
*O. odorata*  
*Pentachondra pumila*  
*Pimelea* sp. (cf. *P. aridula*)  
*P. oreophila*  
*P. seticeovillosa*

### DICOT LIANES AND RELATED

#### TRAILING PLANTS

*Clematis marata* (unc)  
*Muehlenbeckia axillaris*  
*M. complexa*

#### LYCOPODS

*Lycopodium australianum*  
*L. fastigiatum*

#### QUILLWORTS

*Isoetes alpinus* (unc)

#### FERNS

*Asplenium richardii*  
*A.* sp. (unnamed; aff. *A. trichomanes*)  
*Blechnum penna-matina*  
*Cystopteris tasmanica*  
*Grammitis poeppigiana*  
*Hymenophyllum multifidum*  
*H. villosum*  
*Polystichum cystostegia*  
*P. vestitum*

#### ORCHIDS

*Microtis unifolia*  
*Prasophyllum colensoi*  
*Thelymitra longifolia*

#### GRASSES

*Agrostis muelleriana*  
*A.* sp. (unnamed; aff. *A. dyeri*)  
 (panicle spreading; not contracted as in *A. dyeri*)  
*Chionochloa australis*  
*C. pallens* ssp. *pilosa*  
*C.* sp. (unnamed) (*C. flavescens* auct. South Island, non *C. flavescens* Zotov)  
*C. pallens* x *C.* sp. (unnamed)  
*Deyeuxia arenoides* (incl. *D. a.* var. *brachyantha*)  
*Elymus anysii*  
*E.* sp. (aff. *E. rectisetus*) (plants glaucous; lf blade flat)  
*Festuca novae-zelandiae*  
*F.* sp. (*F. matthewsii* sensu Connor 1968)  
*Microchloa equisetata* (unc)  
*Koeleria* sp. (*K. novo-zelandica* agg.) (lf blade flat)  
*Lachnagrostis* sp. (unnamed; included in *L. filiformis*, as var. *semiglabra*, by Zotov 1965)  
*Poa buechananii*  
*P. cita* ssp. *cita*

- P. colensoi*
- P. dipsacea*
- P. kirkii*
- P. lindsayi*
- P. subvestita*

- Rytidosperma australe*
- R. buechananii*
- R. pumilum*
- R. setifolium*
- Trisetum youngii* (unc)
- T. sp.* (*T. subspicatum*)

**SEDGES**

- Carex berggrani* (unc)
- C. breviculmis*
- C. buechananii*
- C. coriacea*
- C. echinata* var. (*C. stellulata* var. *australis*)
- C. gaudichaudiana*
- C. kaloides*
- C. muelleri*
- C. petriei*
- C. pyrenaica* var. *cephalotes*
- C. sinclairii*
- C. wakatipu* ss.
- C. sp.* (unnamed; aff. *C. testacea*)  
(lvs usually reddish; utricle margins not scabrid)
- Carpha alpina* ss.
- Isolepis aucklandica*
- I. caliginis*

- Oreobolus pectinatus*
- Schoenus pauciflorus* ss.
- Uncinia divaricata*
- U. fuscovaginata* var. (plants glaucous) (unc)
- U. purpurata* (include *U. fuscovaginata* var. *caespitans*) (?)
- U. rubra*

**RUSHES**

- Juncus antarcticus*
- J. novae-zelandiae*
- J. pusillus*
- Luzula colensoi*
- L. migrata*
- L. pumila*
- L. tufa* ss.
- L. traversii* ss.
- L. sp. (i)* (unnamed; included in *L. tufa*, as var. *albicomans*, by Edgar 1966)
- L. sp. (ii)* (unnamed; included in *L. crinita*, as var. *petrieana*, by Edgar 1966)
- L. sp. (c)* (unnamed; aff. *L. tufa*)  
(plants stoloniferous; infl head smaller than in *L. tufa*)

**Marsippospermum gracile**  
**MONOCOT HERBS OTHER THAN**  
**ORCHIDS, GRASSES, SEDGES, RUSHES**

- Astelia nervosa* ss. (unc)
- A. petriei* (unc)

*Photmium cookianum*  
*Potamogeton cheesemanii*

### COMPOSITE HERBS

- Anaphalis* sp. (*Helichrysum bellid-* white with cottony hairs; fls yellow)  
*ioides* s.s.)  
*Brachyglottis bellidioides* s.s.  
*B. lagopus* var. *lagopus*  
*Brachyscome radicata* (unc)  
*B. sinclairii* s.s.  
*Celmisia alpina* s.s.  
*C. cochayneana*  
*C. gracilentata* var.  
*C. incana* (incl. *C. discolor*) (unc)  
*C. laticefolia*  
*C. lateralis* (incl. *C. l. var. villosa*)  
 (unc)  
*C. monroi* ssp. *monroi*  
*C. sessiliflora*  
*C. sinclairii* (incl. *C. allanii* and  
*C. durietzii*)  
*C. spectabilis* ssp. *spectabilis*  
*C. traversii*  
*C. sp.* (unnamed; aff. *C. gracilentata*)  
 (plants strongly rhizomatous)  
*C. monroi* X *C. spectabilis*  
*C. m.* X *C. traversii*  
*C. sessiliflora* X *C. traversii*  
*C. spectabilis* X *C. traversii*  
*Craspedia* sp.(i) (unnamed; in-  
 cluded in *C. lanata*, as var.  
*elongata*, by Allan 1961) (plants  
 summer-green; lvs white or  
 greenish white; both surfaces  
 clad in cottony hairs; fls white)  
*C. sp.(ii)* (unnamed) (plants summer-  
 green; lvs green; both surfaces  
 densely clad in short hairs; margins  
 white with cottony hairs; fls yellow)  
*C. sp.(iii)* (unnamed) (plants summer-  
 green; lvs green; both surfaces clad  
 in multicellular hairs; margins  
 white with cottony hairs; fls white)  
*Dolichoglottis lyallii*  
*Ewartia sinclairii*  
*Gnaphalium audax*  
*G. laterale*  
*G. machayi* s.s.  
*G. traversii*  
*Maastia pulvinaris* s.s.  
*H. recurva*  
*H. sinclairii* s.s.  
*Helichrysum filicaule*  
*Lagenifera cuneata*  
*Leptinella dandyi*  
*L. dioica* ssp. *dioica*  
*L. pyrethriifolia* s.s.  
*L. serrulata*  
*L. sp.(i)* (unnamed; included in  
*C. squalida*, as ssp. *mediana*,  
 by Lloyd and Webb, 1987)  
*L. sp.(ii)* (unnamed; aff. *C. squal-*  
*ida*)  
*Leucogenes grandiceps*  
*L. sp.* (unnamed; aff. *L. leonto-*  
*podium*)  
*Microseris scapigera* var.  
*Pseudognaphalium* sp. (unnamed;  
 aff. *P. luteoalbum*)

- Raoulia apicinigra s.s. (unc)
- R. australis agg
- R. bryoides
- R. eximia var. eximia
- R. glabra
- R. grandiflora var. grandiflora
- R. parkii
- R. subseticea
- R. tenuicaulis (incl. R.t. var. di-  
morpha and R.t. var. pusilla)
- Senecio glaucophyllus ssp. (aff.  
ssp. toa)
- S. wairauensis
- Taraxacum magellanicum
- Vittadinia australis agg.

DICOT HERB OTHER THAN  
COMPOSITES

- Acaena caesiiglauc
- A. fissistipula
- A. glabra
- A. inermis
- A. profundeincisa
- A. saecaticupula
- Aciphylla aurea
- A. colensoi var. colensoi
- A. montoi
- A. sp. (unnamed; aff. A. glauc-  
escens) (pinnae rigid, not  
flaccid as in A. glaucescens)
- Anisotome aromatica
- A. filifolia
- A. flexuosa var. flexuosa (unc)

- A. pilifera (unc)
- Cardamine sp. (i) (unnamed)  
("Scree Race" of Pritchard 1957)
- C. sp. (ii) (C. debilis agg.) (capsules  
minutely hairy)
- Chaesemania sp.
- Chionohebe pulvinaris
- Colobanthus acicularis
- C. apetalus (incl. C. a. var. alpinus)
- C. buechananii
- C. strictus
- Drosera arcturi (unc)
- Epilobium alsinoides s.s.
- E. atriplicifolium s.s.
- E. brunnescens s.s.
- E. chionanthum
- E. chlorifolium
- E. crassum (unc)
- E. forbesii
- E. glabellum s.s.
- E. insulare
- E. komarovianum
- E. krullianum
- E. linnaeoides
- E. macropus
- E. melanocaulon
- E. microphyllum
- E. pernitens (unc)
- E. porphyrium
- E. pubens
- E. pycnostachyum
- E. tasmanicum
- E. sp. (unnamed; included in E.  
brunnescens, as ssp. minuti-

- florum, by Raven and Engelhorn, 1971)
- Euphrasia zelandica* agg.  
*E. sp. (i)* (unnamed; aff. *E. petriei*)  
*E. sp. (ii)* (cf. *E. monroi* and *E. laingii*)  
*Forstera tenella*  
*Galium perposillum* ss.  
*G. propinquum*  
*Gentiana bellidifolia* agg.  
*G. corymbosa*  
*G. sp.* (unnamed; aff. *G. montana*) (plants vs. biennial, occasionally perennial, much branched from the base)  
*Geranium* <sup>sp. (unnamed; aff. *G. microphyllum*)</sup> *microphyllum*)  
*G. sessiliflorum* var. *novae-zelandiae*  
*Geum* sp. (*G. parviflorum* agg.) (stock short; terminal leaflet about as long as broad; fls up to 13 mm diam.)  
*Gingidia decipiens*  
*G. montana*  
*Gonocarpus aggregatus*  
*Hydrocotyle sulcata*  
*H. sp.* (unnamed; included in *H. novae-zeelandiae*, as var. *montana*, by Kirk 1899)  
*Kelleria dieffenbachii*  
*Lignocarpa* sp.  
*Montia fontana* s.s.  
*Myosotis traversii* var. *traversii*
- M. sp. (i)* (*M. australis* agg.) (*M. saxatilis* Petrie 1918, non *M. saxatilis* Pallas 1795) (fls white)  
*M. sp. (ii)* (*M. australis* agg.) (fls yellow)  
*M. sp. (iii)* (unnamed; included in *M. pygmaea*, as var. *drucei*, by Moore 1964)  
*Neopaxia* sp. (incl. *Montia calycina* and *Claytonia australasica* var. *biflora*)  
*Nertera balfouriana*  
*Notothlaspi australe* s.s.  
*Oreomyrrhis colensoi* s.s.  
*O. ramosa* agg.  
*Ourisia caespitosa* ssp. *caespitosa*  
*O. simpsonii*  
*O. caespitosa* X *O. simpsonii*  
*Oxalis exilis*  
*Parahebe cheesemani*  
*P. decora*  
*P. lyallii*  
*Phyllachne colensoi* var.  
*Plantago lanigera* sl. (incl. *P. novae-zeelandiae*)  
*P. obconica* (unc)  
*P. raoulii*  
*P. triandra* s.s.  
*P. uniflora*



*Pratia angulata* agg.  
*P. macrodon* s.s. (unc)  
*Psychrophila obtusa*  
*Ranunculus cheesemanii* var.  
*cheesemanii*  
*R. foliosus*  
*R. gracilipes*  
*R. insignis*  
*R. verticillatus*  
*R. sp.* (unnamed; included in *R.*  
*lappaceus*, as var. *macro-*  
*phyllus*, by Kirk 1899)  
*R. gracilipes* x *R. insignis*  
*R. insignis* x *R. verticillatus* (?)  
*Rumex flexuosus*  
*Schizalema nitens*  
*S. pallidum*  
*S. roughii*  
*Scleranthus brockiei*  
*Suniflorus*  
*Stellaria gracilentia*  
*S. roughii*  
*Viola cunninghamii*  
*Wahlenbergia albomarginata*  
 var. *albomarginata* (incl. *W.*  
*pygmaea* var. *laxa*, *W. brockiei*,  
 and *W. simpsonii*)  
*W. cartilaginea*

No. of species: 292.

REFERENCES

Allan, H.H. 1961: "Flora of New Zealand". Government Printer, Wellington. Vol. 1. 1085 pp.

Connor, M.E. 1968: Interspecific hybrids in hexaploid New Zealand Festuca. N.Z. J. Bot. 6: 295-308.

Edgar, E. 1966: Luzula in New Zealand. N.Z. J. Bot. 4: 159-84.

Franklin, D.A. 1962: The Ericacea in New Zealand (Gaultheria and Perrettia). Trans R. Soc. N.Z. Bot. 1: 155-73.

Lloyd, D.G.; Webb, C.J. 1987: The reinstatement of Heptinella at generic rank, and the status of the 'Cotuleae' (Asteraceae, Anthemideae). N.Z. J. Bot. 25: 99-105.

Kirk, T. 1899: "The Students' Flora of New Zealand". Government Printer, Wellington. 408 pp.

Moores, L.B. 1961: In "Flora of New Zealand". Government Printer, Wellington. Vol. 1. 1085 pp.

Pritchard, G.G. 1957: Experimental taxonomy studies on species of Cardamine Linn. in New Zealand. Trans R. Soc. N.Z. 85: 75-89.

Raven, P.H.; Engelman, T. 1971: New taxa and new combinations in Austasian Epilobium (Onagraceae). N.Z. J. Bot. 9: 345-50.

Zotov, V.D. 1965: Grasses of the subantarctic islands of the New Zealand region. Rec. Dom. Mus. Wellington 5: 101-46.

Simpson, G. 1945: Notes on some New Zealand plants and descriptions of new species 4. T. R. Soc. N.Z. 75: 187-202.