

Mahoe (whiteywood)
 Manuka (tea tree)
 New Zealand flax
 Pittosporum
 Pohutukawa (New Zealand Christmas tree)
 Pseudopanax
 Raupo
 Sedge (carex)
 Shiny spleenwort
 Ti kouka (cabbage tree)
 Toitoi
 Tree fern

Meliccytus ramiflorus
Leptospermum scoparium
Phormium tenax
Pittosporum sp.
Metrosideros excelsa
Pseudopanax sp.
Typha orientalis
Carex sp.
Asplenium sp.
Cordyline australis
Cortaderia sp.
Dicksonia sp.

Introduced species

Alder
 Arum lily (calla lily)
 Buddleia
 Eucalyptus
 Leyland cyprus
 Nightshade
 Old man's beard (clematis/traveller's joy)
 Oxygen weed
 Radiata pine
 Thistle
 Tree lucerne
 Wandering Jew
 Water lily

Alnus sp.
Zantedeschia aethiopica
Buddleia davidii
Eucalyptus sp.
Cupressocyparis leylandii
Solanum sp.
Clematis vitalba
 Hydrocharitaceae family
Pinus radiata
Cirsium sp.
Chamaecytisus palmensis
Tradescantia fluminensis
Nymphaea sp.

Whitby Lower Lake Reserve

Carp are present in the lake and trout are released into it. Several common bird species such as ducks, gulls, cormorants, and sparrows can be regularly seen in the reserve.

The following plant species have been identified in the reserve:—

Native species

Griselinia
 New Zealand flax
 Pohutukawa (New Zealand Christmas tree)
 Raupo
 Rush
 Ti kouka (cabbage tree)

Griselinia sp.
Phormium tenax
Metrosideros excelsa
Typha orientalis
Juncus sp.
Cordyline australis

Introduced species

Alder
 Eucalyptus
 Gorse (furze/whin)

Alnus sp.
Eucalyptus sp.
Ulex europeaus

Macrocarpa (Monterey cypress)
 Oxygen weed
 Radiata pine
 Thistle
 Tree lucerne

Cupressus macrocarpa
 Hydrocharitaceae family
Pinus radiata
Cirsium sp.
Chamaecytisus palmensis

Cannon's Creek Lake Reserve

Ducks are a common sight in the reserve.

The following plant species have been identified in the reserve:—

Native species

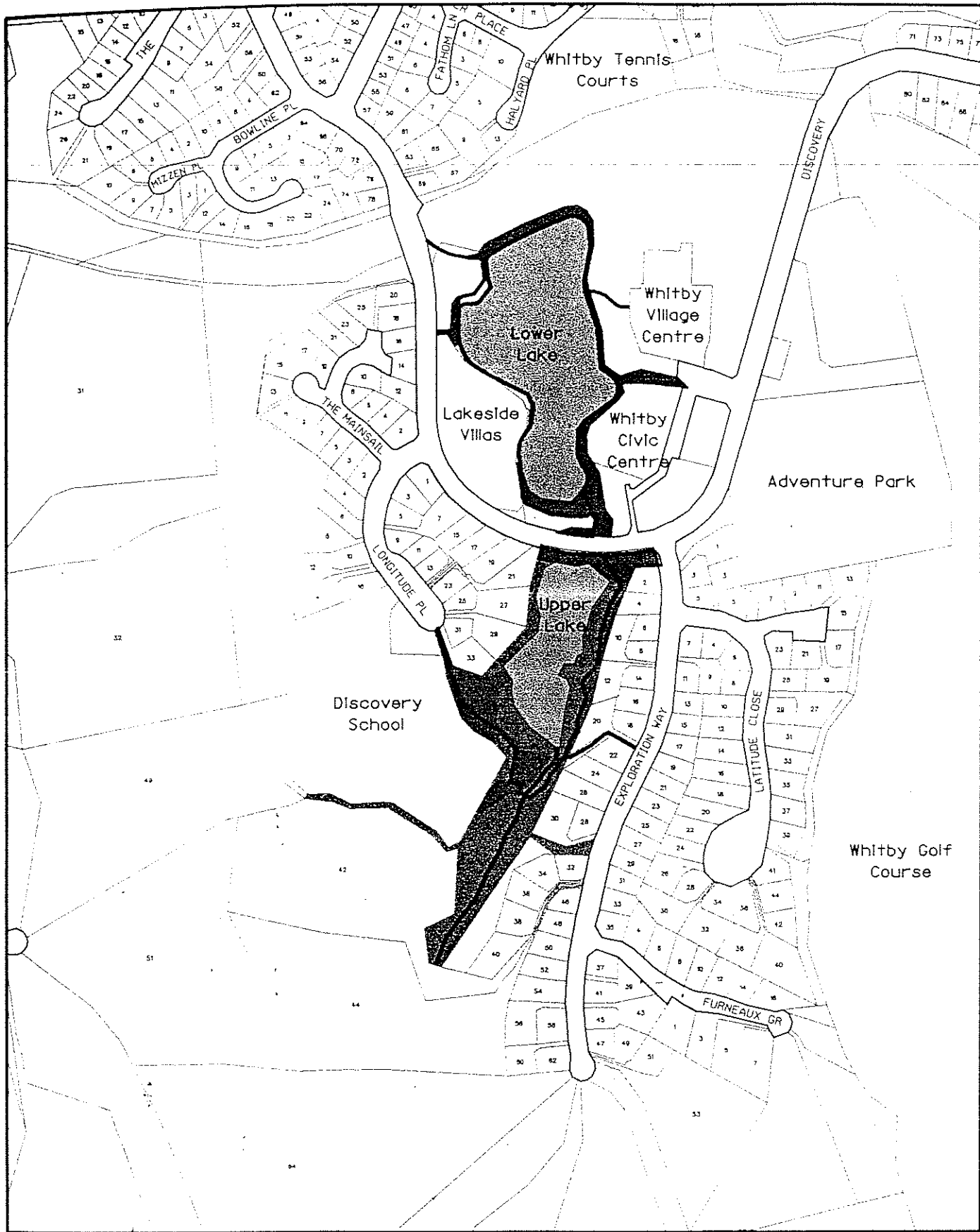
Bracken
 Coprosma
 Griselinia
 Kowhai
 Mahoe (whiteywood)
 Manuka (tea tree)
 New Zealand flax
 Ngaio
 Olearia
 Pittosporum
 Pohutukawa (New Zealand Christmas tree)
 Poroporo
 Pseudopanax
 Rewarewa (New Zealand honeysuckle)
 Rush
 Tarata (lemonwood)
 Ti kouka (cabbage tree)
 Toitoi
 Tree fern
 Watercress

Pteridium esculentum
Coprosma sp.
Griselinia sp.
Sophora sp.
Meliccytus ramiflorus
Leptospermum scoparium
Phormium tenax
Myoporum laetum
Olearia sp.
Pittosporum sp.
Metrosideros excelsa
Solanum sp.
Pseudopanax sp.
Knightia excelsa
Juncus sp.
Pittosporum eugenioides
Cordyline australis
Cortaderia sp.
 Cyatheaceae family
Nasturtium microphyllum

Introduced species

Alder
 Bindweed (convolvulus)
 Blackberry
 Buddleia
 Casuarina
 Eucalyptus
 Fir
 Germander
 Gorse (furze/whin)
 Myrtle
 Nightshade
 Radiata pine

Alnus sp.
Convolvulus sp.
Rubus sp.
Buddleia davidii
Casuarina sp.
Eucalyptus sp.
Abies sp.
Teucrium fruticans
Ulex europeaus
Myrtus sp.
Solanum sp.
Pinus radiata



KEY	Lakes	Grass Area
	Gardens	Stream
	Native Bush	Walkways



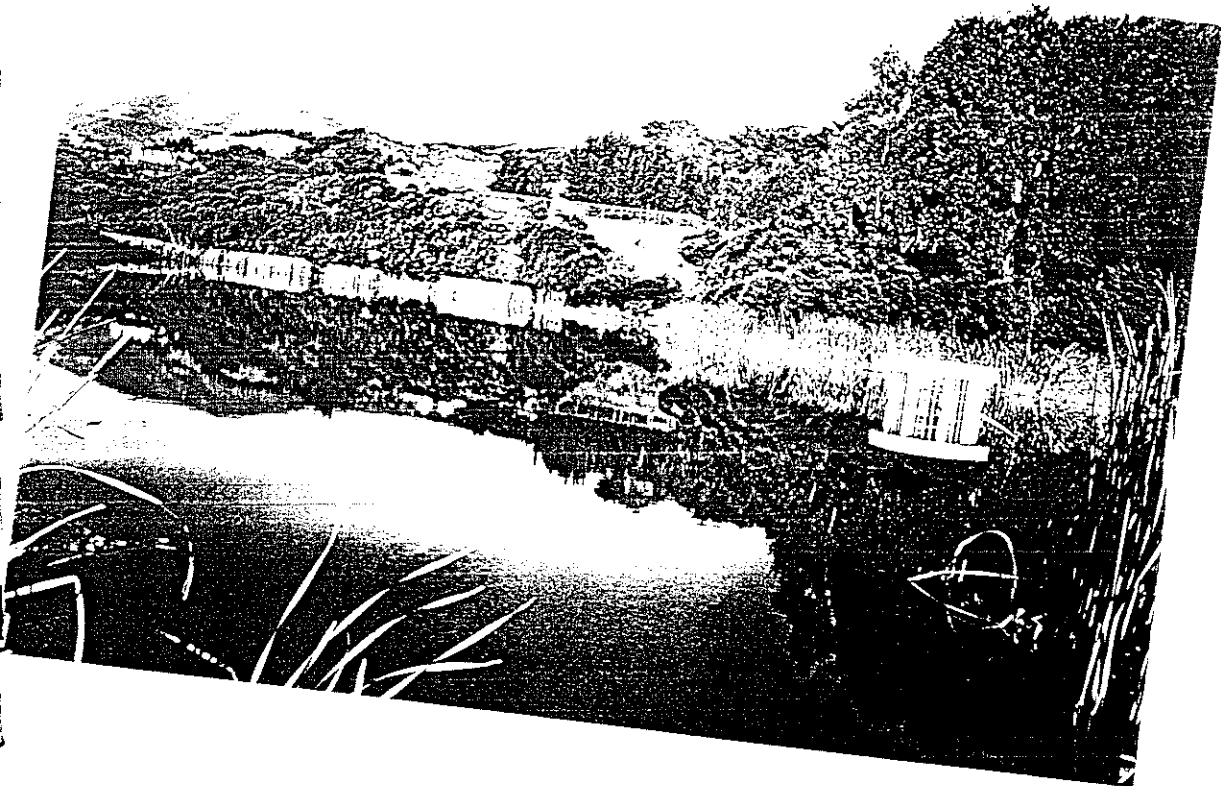
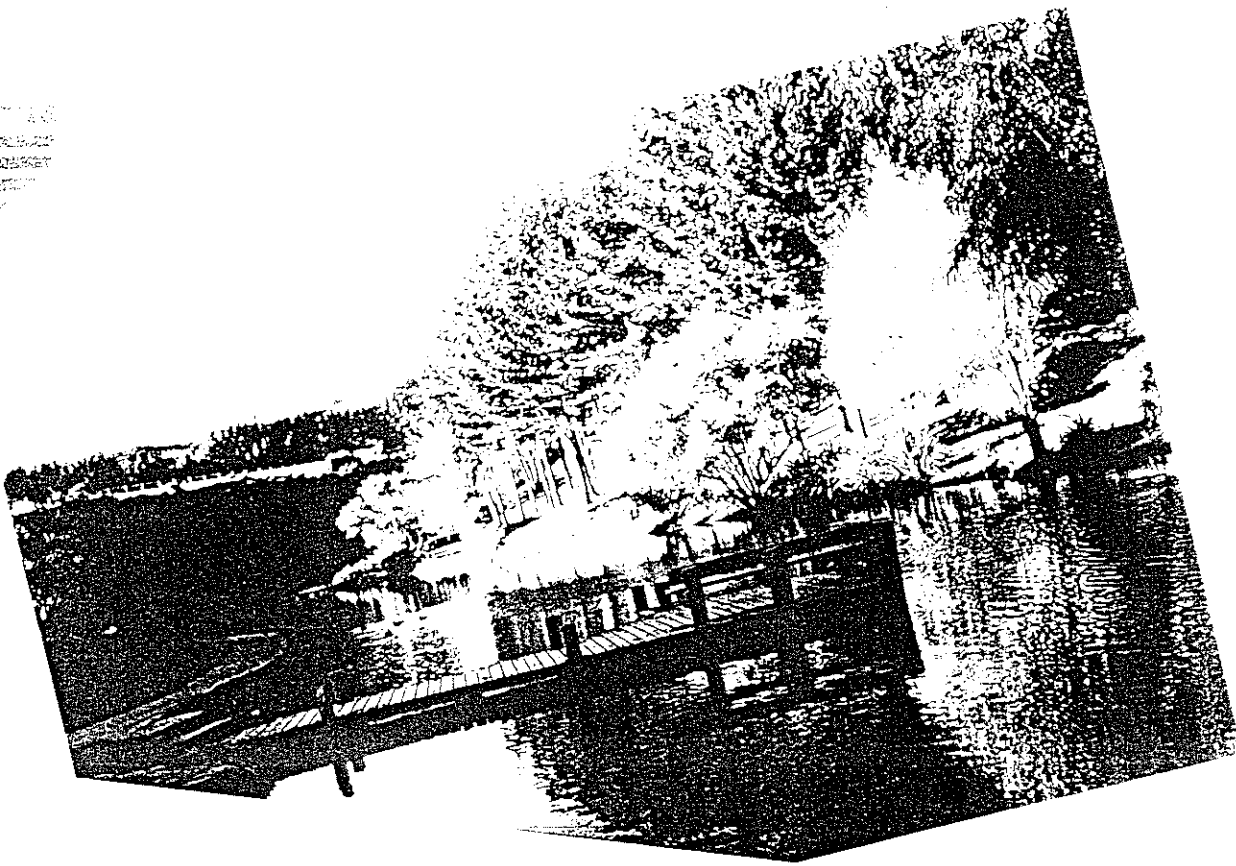
Porirua City Council

Upper and Lower Whitby Lakes

Information on this plan subject to
 PORIRUA CITY COUNCIL COPYRIGHT
 Cadastral information derived from:
 the Department of Lands and Survey
 Information's Digital Cadastral Database
 (DCDB) DRAWN COPYRIGHT RESERVED
 Approved for Internal reproduction by
 Porirua City Council

COMPILED BY
 A Scrimgeour
 DATE 31/05/96
 SCALE 1:5,000
 DRAWING NUMBER

Proposed
AMENITY-LAKES
Management Plan



Proposed
Porirua City
AMENITY-LAKES
Management Plan

Prepared in accordance
with sections 41 and 119
of the Reserves Act 1977
as amended.