

Arthrorhaphis alpina

COMMON NAMES

Alpine dot lichen

BIOSTATUS

Native

CURRENT CONSERVATION STATUS

2018 | Not Threatened | Qualifiers: SO

CATEGORY

Lichen

STRUCTURAL CLASS

Lichens - Crustose

LICHEN SUBSTRATE

Terricolous (soil)

SUBSTRATE DETAILS

Terricolous

GENUS

Arthrorhaphis

FAMILY

Arthrorhaphidaceae

AUTHORITY

Arthrorhaphis alpina (Schaer.) R.Sant.

SYNONYMS

Lecidea flavovirescens var. alpina

ENDEMIC TAXON

No

ENDEMIC GENUS

No

ENDEMIC FAMILY

No

ETYMOLOGY

alpina: From the Latin alpes 'the Alps', refers to plants growing in mountainous areas

NVS CODE

ARTALP

REFERENCES AND FURTHER READING

Galloway D.J. 1985: *Flora of New Zealand: Lichens*. Wellington: PD Hasselberg, Government Printer. 662 pp.
Galloway D.J. 2007: *Flora of New Zealand: Lichens, including lichen-forming and lichenicolous fungi*. 2nd edition. Lincoln, Manaaki Whenua Press. 2261 pp.

MORE INFORMATION

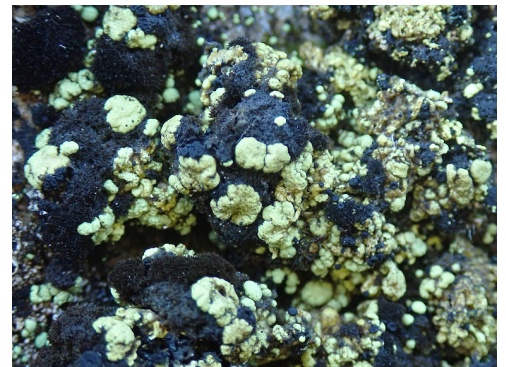
<https://www.nzpcn.org.nz/flora/species/arthrorhaphis-alpina/>

PDF DATE

25 May 2026



Lake Ida, Canterbury. Photographer: Melissa Hutchison, Date taken: 26/07/2020, Licence: CC BY-NC.



Lake Ida, Canterbury. Photographer: Melissa Hutchison, Date taken: 26/07/2020, Licence: CC BY-NC.