

Caloplaca allanii

COMMON NAMES

Waitakere firedot lichen

BIOSTATUS

Native – Endemic taxon

CURRENT CONSERVATION STATUS

2018 | Threatened – Nationally Critical | Qualifiers: DP, RR, Sp

CATEGORY

Lichen

STRUCTURAL CLASS

Lichens - Crustose

LICHEN SUBSTRATE

Saxicolous (rock)

SUBSTRATE DETAILS

Saxicolous (basalt)

GENUS

Caloplaca

FAMILY

Teloschistaceae

AUTHORITY

Caloplaca allanii Zahlbr.

ENDEMIC TAXON

Yes

ENDEMIC GENUS

No

ENDEMIC FAMILY

No

ETYMOLOGY

allanii: After Dr Harry Howard Barton Allan C.B.E. (1882–1957) one time school teacher, then first director of DSIR Botany Division, and 'sole' author of Flora I, the first in the former DSIR Botany Division flora series.

REFERENCES AND FURTHER READING

Galloway D.J. 1985: *Flora of New Zealand: Lichens*. Wellington: PD Hasselberg, Government Printer. 662 pp.

Galloway D.J. 2007: *Flora of New Zealand: Lichens, including lichen-forming and lichenicolous fungi*. 2nd edition.

Lincoln, Manaaki Whenua Press. 2261 pp.

Radio New Zealand 2021: *Critter of the Week - Waitakere Firedot Lichen*.

<https://www.rnz.co.nz/national/programmes/afternoons/audio/2018794589/critter-of-the-week-waitakere-firedot-lichen>

Sparkes J.H., de Lange, P. J., and Blanchon D. J. 2014: Notes on *Caloplaca allanii* Zahlbr. (Teloschistaceae), a poorly known West Auckland, North Island, New Zealand endemic. *New Zealand Journal of Botany* 52(3): 304–309.

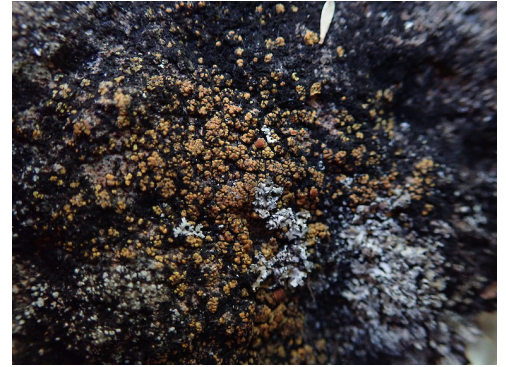
Zahlbruckner A. and Redinger K. 1934: Lichenes Rariores Exsiccati. No.s 312–338. Wien.

MORE INFORMATION

<https://www.nzpcn.org.nz/flora/species/caloplaca-allanii/>

PDF DATE

25 May 2026



On basalt. Photographer: Marley Ford, Licence: CC BY-NC.



On basalt. Photographer: Marley Ford, Licence: CC BY-NC.