

Gaultheria paniculata

FAMILY

Ericaceae

AUTHORITY

Gaultheria paniculata B.L.Burtt et A.W.Hill

FLORA CATEGORY

Vascular – Native

ENDEMIC TAXON

Yes

ENDEMIC GENUS

No

ENDEMIC FAMILY

No

STRUCTURAL CLASS

Trees & Shrubs - Dicotyledons

NVS CODE

GAUPAN

CHROMOSOME NUMBER

2n = 22

CURRENT CONSERVATION STATUS

2017 | Not Threatened

PREVIOUS CONSERVATION STATUSES

2012 | Not Threatened

2009 | Not Threatened

2004 | Not Threatened

BRIEF DESCRIPTION

Bushy sprawling shrub bearing elliptic leathery toothed leaves inhabiting open areas in the North Island. Twigs reddish, hairs dark, bristly. Flowers in several wide branched sprays to 6cm long and 6cm wide (at the base) towards the tip of twigs. Leaves 3-5cm long by 1-2cm wide. Fruit a dry capsule.

FLOWER COLOURS

Cream, White

LIFE CYCLE

Seeds are wind dispersed (Thorsen et al., 2009).

ETYMOLOGY

gaultheria: Named after Jean François Gaultier of Quebec (6 Oct 1708-10 July 1756) by the Scandinavian Pehr Kalm in 1748.

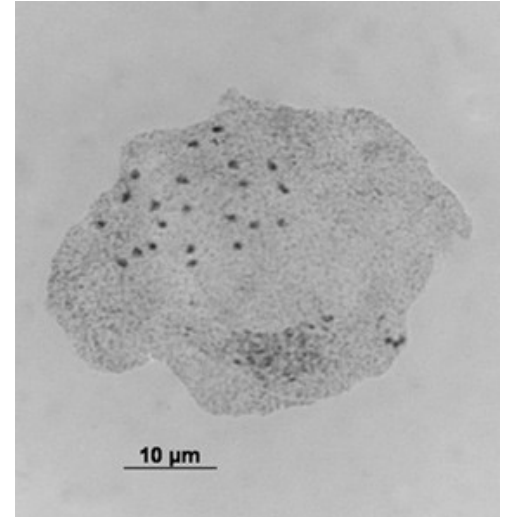
paniculata: Small sprayed

REFERENCES AND FURTHER READING

Thorsen, M. J.; Dickinson, K. J. M.; Seddon, P. J. 2009. Seed dispersal systems in the New Zealand flora. Perspectives in Plant Ecology, Evolution and Systematics 11: 285-309

MORE INFORMATION

<https://www.nzpcn.org.nz/flora/species/gaultheria-paniculata/>



In cult. Chromosomes 2n = 22. Photographer: Brian G. Murray, Licence: CC BY-NC.



Gaultheria paniculata. Whakamaru, September. Photographer: John Smith-Dodsworth, Licence: CC BY-NC.