

Placopsis centrifuga

BIOSTATUS

Native – Endemic taxon

CURRENT CONSERVATION STATUS

2018 | Data Deficient | Qualifiers: Sp

CATEGORY

Lichen

STRUCTURAL CLASS

Lichens - Placodioid

LICHEN SUBSTRATE

Saxicolous (rock)

SUBSTRATE DETAILS

Saxicolous (limestone)

GENUS

Placopsis

FAMILY

Trapeliaceae

AUTHORITY

Placopsis centrifuga D.J.Galloway

ENDEMIC TAXON

Yes

ENDEMIC GENUS

No

ENDEMIC FAMILY

No

REFERENCES AND FURTHER READING

Galloway D.J. 2007: *Flora of New Zealand: Lichens, including lichen-forming and lichenicolous fungi*. 2nd edition. Lincoln, Manaaki Whenua Press. 2261 pp.

MORE INFORMATION

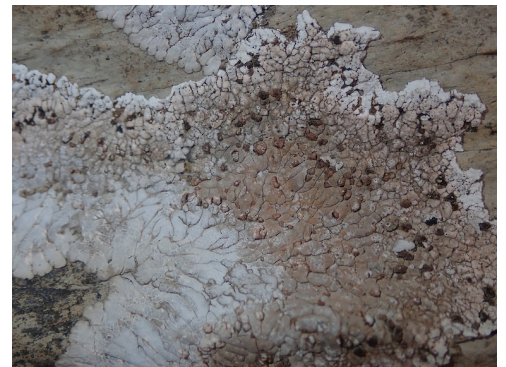
<https://www.nzpcn.org.nz/flora/species/placopsis-centrifuga/>

PDF DATE

27 May 2026



On limestone, Thousand Acre Plateau, Kahurangi National Park. Photographer: Marley Ford, Licence: CC BY-NC.



On limestone, Thousand Acre Plateau, Kahurangi National Park. Photographer: Marley Ford, Licence: CC BY-NC.