

# Pseudolophocolea denticulata

## COMMON NAMES

liverwort

## BIOSTATUS

Native – Endemic taxon

## CURRENT CONSERVATION STATUS

2020 | Threatened – Nationally Critical | Qualifiers: DP, RR, Sp

[Jump to previous conservation statuses](#)

## CATEGORY

Non-vascular

## STRUCTURAL CLASS

Liverworts

## GENUS

Pseudolophocolea

## FAMILY

Lophocoleaceae

## AUTHORITY

Pseudolophocolea denticulata R.M.Schust. et J.J.Engel

## ENDEMIC TAXON

Yes

## ENDEMIC GENUS

No

## ENDEMIC FAMILY

No

## ETYMOLOGY

**denticulata:** Finely toothed

## NVS CODE

PSEDEN

## PREVIOUS CONSERVATION STATUSES

2009 | Threatened – Nationally Critical | Qualifiers: DP

2004 | Range Restricted

[Jump to current conservation status](#)

## MORE INFORMATION

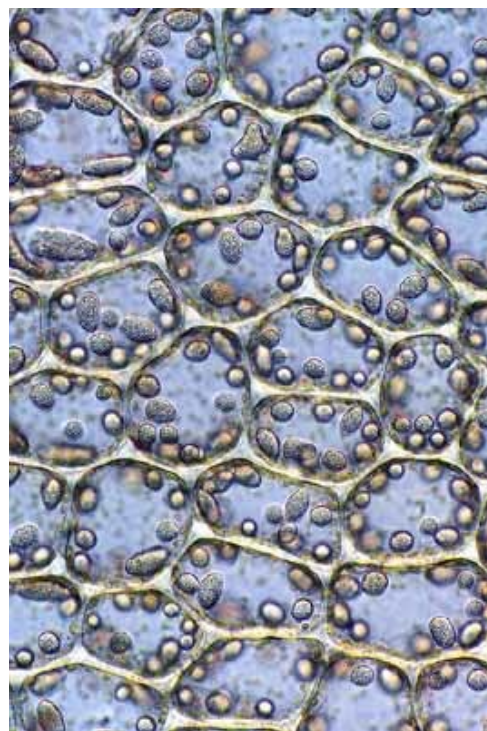
<https://www.nzpcn.org.nz/flora/species/pseudolophocolea-denticulata/>

## PDF DATE

25 May 2026



Pseudolophocolea denticulata. Photographer: Bill Malcolm, Licence: All rights reserved.



Pseudolophocolea denticulata. Photographer: Bill Malcolm, Licence: All rights reserved.