

# Raoulia eximia

## COMMON NAME

vegetable sheep

## SYNONYMS

*Haastia greenii* Hook.f.; *Psychrophyton eximium* Beauverd

## FAMILY

Asteraceae

## AUTHORITY

*Raoulia eximia* Hook.f.

## FLORA CATEGORY

Vascular – Native

## ENDEMIC TAXON

Yes

## ENDEMIC GENUS

Yes

## ENDEMIC FAMILY

No

## STRUCTURAL CLASS

Herbs - Dicotyledonous composites

## NVS CODE

RAOEXI

## CHROMOSOME NUMBER

2n = 28

## CURRENT CONSERVATION STATUS

2017 | Not Threatened

## PREVIOUS CONSERVATION STATUSES

2012 | Not Threatened

2009 | Not Threatened

2004 | Not Threatened

## DISTRIBUTION

Endemic. South Island - mostly east of the main divide from Marlborough to northern Southland

## HABITAT

Subalpine to alpine. In rocky ground such as scree and talus slopes, cliff faces and boulder falls and in fellfield

## FEATURES

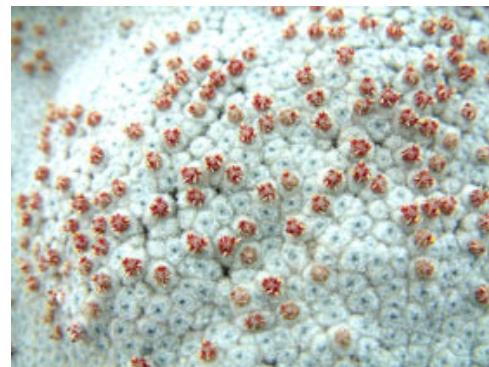
Stock very stout, woody; branches woody below, very densely compacted, forming rounded cushions up to 1 m or more diameter, up to 1 m tall. Leaves densely imbricate, 3.0-4.0 × up to 1.5 mm, 1-nerved, obovate- to oblong-spathulate to narrow-oblong, rounded at apex; apical portion on both surfaces with dense brush of long straight hairs exceeding and obscuring outline of lamina; ventral surface glabrous below; dorsal surface clad in ascending straight hairs. Capitula c.3 mm diameter. Inner series of involucral bracts linear, 3-4 mm long, scarious on margins, pilose in upper portion, tips not white, not radiating. Florets 10-15 or more. Achenes hardly 1 mm long, clad in long silky hairs; pappus-hairs rigid

## FLOWERING

November - January



Foggy peak, Torlesse range. January.  
Photographer: John Smith-Dodsworth



Foggy peak, Torlesse range. January.  
Photographer: John Smith-Dodsworth

## FRUITING

January - April

## PROPAGATION TECHNIQUE

Difficult - should not be removed from the wild

## ETYMOLOGY

**raoulia**: Named after Étienne Fiacre Louis Raoul (23 July 1815–30 March 1852) who was a French naval surgeon and naturalist. He published a book *Choix de plantes de la Nouvelle-Zélande* ("Selected plants of New Zealand") in 1846. The genus was named after him by Joseph Hooker.

**eximia**: Strikingly unusual

## WHERE TO BUY

Not commercially available.

## ATTRIBUTION

Description adapted from Allan (1961).

## REFERENCES AND FURTHER READING

Allan, H.H. 1961: *Flora of New Zealand*. Vol. I, Government Printer, Wellington.

## MORE INFORMATION

<https://www.nzpcn.org.nz/flora/species/raoulia-eximia/>