

# Sticta babingtonii

## FAMILY

Peltigeraceae

## AUTHORITY

*Sticta babingtonii* D.J.Galloway

## FLORA CATEGORY

Lichen – Native

## ENDEMIC TAXON

Yes

## ENDEMIC GENUS

No

## ENDEMIC FAMILY

No

## STRUCTURAL CLASS

Lichens - Foliose

## CURRENT CONSERVATION STATUS

2018 | At Risk – Declining | Qualifiers: DP

## BRIEF DESCRIPTION

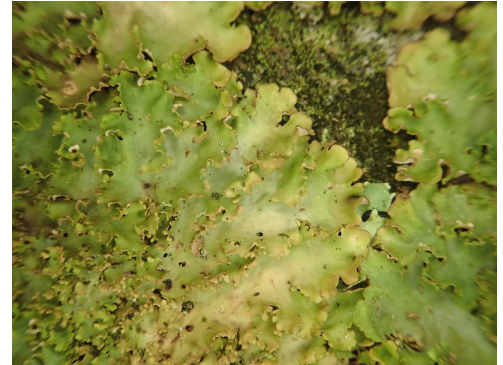
Characterised by the corticolous/saxicolous habit; irregular to orbicular, rather coriaceous, brittle thalli; a green photobiont; a white medulla; densely developed, characteristic marginal phyllidia that are often minutely pubescent below; distinctive ochre-brown, orange, yellow or pinkish cyphellae on the lower surface; and colourless to pale yellow-brown, 7-septate, slightly curved ascospores,  $45\text{--}55\text{--}(61) \times 8\text{--}11\text{ }\mu\text{m}$ .

## DISTRIBUTION

**North Island:** Northland to Taranaki. **South Island:** Nelson (Kaihoka Lakes).

## HABITAT

Epiphytic on coastal trees (*Agathis australis*, *Beilschmiedia tarairi*, *Cordyline australis*, *Leptospermum scoparium* agg., *Lophomyrtus*, *Pseudopanax crassifolius*, *Quintinia serrata* and *Weinmannia silivicola*, and on damp rock faces and coastal rocks.



Corticolous in alluvial forest remnant, Long Bush Gisborne. Photographer: Marley Ford, Date taken: 24/01/2022, Licence: CC BY-NC.



Corticolous in alluvial forest remnant, Long Bush Gisborne. Photographer: Marley Ford, Date taken: 24/01/2022, Licence: CC BY-NC.

## DETAILED DESCRIPTION

**Thallus** 5-10(-15) cm diam., ± loosely attached, thick, coriaceous, rather brittle when dry. **Lobes** 2-4(-5) mm wide, to 15 mm long, ± discrete at periphery, overlapping and becoming complicate-convolute centrally, margins raised, crenate-incised, pectinate, sinuous, phyllidiate. **Upper surface** matt, smooth, lettuce-green to olive-greenish when wet, tinged red-brown to dark brown at margins, pale greenish-buff when dry, ± papillate in places (internal cephalodia). Phyllidia mainly marginal and there often dense, less often laminal, simple to coralloid-branched, 0.1-0.3 mm wide, 0.2-1.2 mm tall, terete to flattened, often minutely pubescent below, tinged brownish at apices. **Lower surface** mainly smooth, minutely wrinkled or pitted near margins, ± uniformly tomentose to margins, tomentum thin at margins, thick centrally, brownish to brown- black centrally, buff or pale brown at margins. Cyphellae sparse to numerous, 0.1-1.5 mm diam., sunk in tomentum, round to irregular, membrane of pit roughened, ochre-brown, orange, yellowish or dull brownish-pink, never white. says **Apothecia** not seen by Galloway (1985) but have recently been observed (Marley Ford pers. comm.).

**Chemistry:** A range of yellow and orange (UV+ yellow or orange after charring) pigments.

## SIMILAR TAXA

It is distinguished from *Sticta squamata* and *S. martinii* in the colour of the cyphellae (the other species may have white cyphellae), nature of the lobes, and the colour of the lower surface. In early accounts of New Zealand lichens, *S. babingtonii* was recorded as *S. variabilis*, a palaeotropical phyllidiate species known from the Indian Ocean islands and East Africa, but not present in New Zealand. It is distinguished from *S. babingtonii* in the more delicate, friable lobes, the white cyphellae and by 3-septate ascospores. It is possibly related to the Lord Howe endemic *S. flavocyphellata*, which also has orange to ochre-brown cyphellae on the lower surface, but which has entire margins without phyllidia.

## SUBSTRATE

Corticolous, occasionally saxicolous.

## ETYMOLOGY

**sticta:** spotted, dappled

## ATTRIBUTION

Fact sheet prepared by Marley Ford (17 June 2021). Information in the Brief description, Distribution, Habitat, Features and Similar taxa sections copied from Galloway (1985, 2007).

## REFERENCES AND FURTHER READING

Galloway D.J. 1985: *Flora of New Zealand: Lichens*. Wellington: PD Hasselberg, Government Printer. 662 pp.  
Galloway D.J. 2007: *Flora of New Zealand: Lichens, including lichen-forming and lichenicolous fungi*. 2nd edition. Lincoln, Manaaki Whenua Press. 2261 pp.

## MORE INFORMATION

<https://www.nzpcn.org.nz/flora/species/sticta-babingtonii/>