



# TRILEPIDEA

Newsletter of the New Zealand Plant Conservation Network

No. 262

May 2026

Deadline for next issue:  
Friday 19 June 2026

## SUBMIT AN ARTICLE TO THE NEWSLETTER

Contributions are welcome to the newsletter at any time. The closing date for articles for each issue is approximately the 15th of each month.

Articles may be edited and used in the newsletter and/or on the website news page.

The Network will publish almost any article about plants and plant conservation with a particular focus on the plant life of New Zealand and Oceania.

Please send news items or event information to [info@nzpcn.org.nz](mailto:info@nzpcn.org.nz)

Postal address:  
73 Stratford Drive  
Cable Bay 0420  
NEW ZEALAND

## Introducing our conference keynote speakers

Megan Ireland, Chairperson, NZPCN 2026 Conference Organising Committee  
([2026nzpcnconference@gmail.com](mailto:2026nzpcnconference@gmail.com))

We are very pleased to announce and introduce the keynote speakers for the 2026 New Zealand Plant Conservation Network Conference. Below is a small introduction to each of our keynote speakers and their presentation topics.

### Aaria Dobson-Waitere – He kakano ahau: a Kaupapa Māori approach to reindigenising taonga species translocations

Despite a long history of translocating taonga species, these processes continue to be largely shaped by Western frameworks, with few recent examples led by indigenous knowledge and practice. Using the case study of Pua o te Rēinga (*Dactylanthus taylorii*), this research applies Kaupapa Māori methodologies to explore the values and tikanga guiding taonga species translocations across Te Upoko o Te Ika a Māui, the Greater Wellington Region. The findings aim to strengthen partnership-based translocation practices in Aotearoa.

### Carlos Lehnebach – Collaboration: A Driver of Plant Diversity and a Powerful Tool for Its Conservation

Nature is filled with remarkable examples of collaboration between species. Some of these interactions have been recognised for centuries, while others are only now beginning to be understood. In this talk, I will share the challenges and discoveries from a journey to understand the relationships our native orchids have developed with their pollinators and mycorrhizal fungi. Understanding these partnerships has been essential for developing practical conservation tools that are now being used to support the long-term survival of some of our most threatened orchids.

### James Brock – Ferns across the Pacific

Ferns have long been understood to disperse by wind due to having microscopic spore and widely distributed populations, and New Zealand and the other islands of the Pacific provided the biogeographic patterns for this narrative. However, the patterns that framed early hypotheses and ideas on fern ecology are changing due to research into genetics and spore ecology alongside modern taxonomic efforts. Further, in the context of landscape ecology, passive, atmospheric dispersal of spore to islands appears to be limiting; so, why do islands have so many ferns, and what other vectors of fern spore dispersal might contribute to fern occurrence and distributions across the Pacific?

### Jason Arnold – Indigenising Protected Areas: Reclassifying Our Relationship with Nature Through Biocultural Approaches

For more than 180 years, Aotearoa New Zealand's protected area classification system has positioned Māori as separate from, and often a threat to, nature. This has resulted in an entrenched fortress conservation paradigm that fails both biodiversity and the

potential for te Tiriti based equitable partnership. Jason's experience of conducting research with Ngāi Tahu and his mahi delivering Te Au Roa o Te Rākihouia through the South-East Marine Protection programme (SEMP), have fuelled his interest in how biocultural approaches can transform protected area classifications to achieve stronger biological, cultural, and relational outcomes. This keynote explores how biocultural approaches grounded in ahikāroa, rangatiratanga, and kaitiakitanga can help reclassify the relationship between people and nature through mana whenua-led governance, equitable partnership, and lived connection to place.

## Other announcements

### Early-bird registrations closing soon

Early-bird registrations close in just over a month (30 June)—have you registered yet?

### Accommodation discounts

We also have additional accommodation discounts now available for attendees staying at Travelodge, Adina, CityLife, Rydges, Novotel Wellington and ibis Wellington. These can be accessed here:

<https://www.nzpcn.org.nz/nzpcn/events/2026-nzpcn-conference/2026-conference-sponsors/>

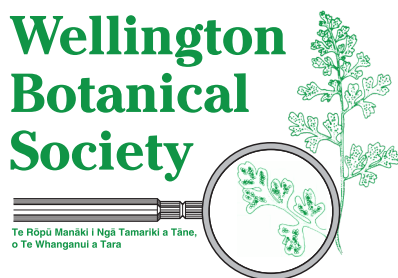
### Conference Sponsors and Supporters

The 2026 NZPCN Conference would not be possible without the generous support of our sponsors and supporters. Their contributions are helping us deliver an exciting programme of talks, workshops and field trips in Te Whanganui-a-Tara Wellington this October.



#### Greater Wellington Regional Council

Greater Wellington Regional Council, along with being a principal conference sponsor, is also providing valuable in-kind support for our field trips, two of which are being held in Greater Wellington Regional Parks.



#### Wellington Botanical Society

Wellington Botanical Society aims to encourage the study of botany and foster an interest in New Zealand native plants, especially in the field. The Society encourages the cultivation of native plants and advocates for the protection of lands and waters in their natural state.



#### Wildland Consultants

Wildland Consultants is a progressive ecological consultancy committed to providing high-quality ecological information, advice and technical services to a wide range of clients. Wildlands has been a consistent supporter of many past NZPCN conferences and is currently a co-sponsor of the NZPCN website.

### In-kind Supporters

We would also like to acknowledge the organisations contributing their time, expertise, venues and support to workshops, field trips and conference organisation:

- Greater Wellington Regional Council
- Ngā Manu Nature Reserve
- Te Papa

- Te Tira Whakamātaki
- Wellington Airport
- Wellington City Council
- Zealandia

We sincerely thank all our sponsors and supporters for helping make the 2026 NZPCN Conference possible.

If you or your organisation would like to support the conference, please get in touch with the conference committee at [2026nzpcnconference@gmail.com](mailto:2026nzpcnconference@gmail.com) or visit the conference website for sponsorship information.



**MUSEUM OF  
NEW ZEALAND  
TE PAPA  
TONGAREWA**



Supported by

**Absolutely Positively  
Wellington City Council**  
Me Heke Kī Pōneke



For more information about our sponsors and the conference programme, please visit the conference website: <https://www.nzpcn.org.nz/nzpcn/events/2026-nzpcn-conference/>

## 2026 NZPCN Conference Charity Auctions – Items wanted

*Matt Ward, NZPCN Council Member ([mattwardward@gmail.com](mailto:mattwardward@gmail.com))*

Kia ora folks, there is a fantastic conference in the making in our wonderful capital, the theme *Māhia ngā here – Collaboration for better conservation*. The conference will coincide with Ōtari Native Botanical Garden & Wilton's Bush Reserve 100-year anniversary. It's shaping up nicely, relying on you all to attend to make it memorable. I have been tasked with running the charity auction to continue to raise funds for our two trusts, the 'David Given Scholarship' and the 'John Sawyer Plant Conservation Fund'. Any funds made from the auctions will be split between the two trusts.

I'm thinking there will be two auctions this conference, as long as we get a selection of items to auction that is, which is where you can contribute... A silent auction run during the presentation programme and a second brief live auction during the conference dinner which will include a selection of up to 10 items depending on how things land. You will all be at the dinner as its part of the entry fee, excellent, lots of potential.

I'm sure you are aware, making these auctions happen is only possible with your help, in the form of item donations, or suggestions for me to follow up on. We are happy to receive anything donated, particularly if it themes toward our core, Aotearoa flora. In the past we have had creations of all types from woven items to oil paintings, hand-crafted celebration cards to second-hand books of interesting provenance, live plants, pressed plants, printed plants, carvings, cups, drink bottles, vouchers, experiences, garments, perfumes and jewellery. You name it, we will auction it, its all for a good cause, our native plants.

So far, we have had some awesome items generously donated, and a few promises...

ART: From Jane Gosden—3 beautiful original acrylic on canvas paintings. Melanie Newfield has promised a drawing or two. Matt Ward will donate a couple of pieces of art too.



Left to right: *Thelymitra carnea* – pink sun orchid by Jane Gosden 2025; *Celmisia macmahonii* var. *macmahonii* – Mt Stokes daisy (not for auction) by Melanie Newfield 2025; *Zealandia pustulata* subsp. *pustulata* – hound's tongue fern (not for auction) by Matt Ward 2008.

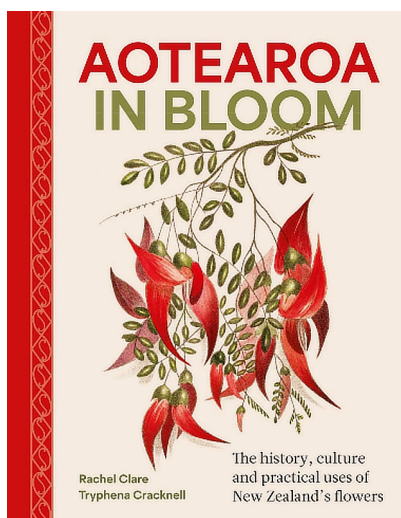
BOOKS: Te Papa Press (thanks to Heidi Meudt), a boxset of 6 gorgeous nature books.

Roger Steele of Steele Roberts Aotearoa has kindly donated two copies of a special book about some of the plants of Rēkohu – Chatham Islands.

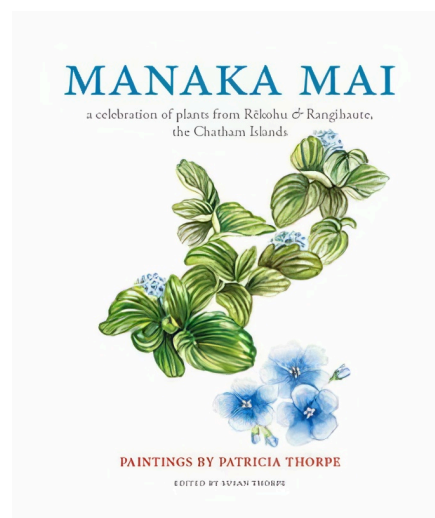
We recently received a copy of “Aotearoa in bloom” to review, this copy has also been donated for auction.



Designed by the award-winning Tim Denee, these charming hardbacks can be used in the backyard or out in nature. Together, and fully illustrated, they cover more than 400 species of plants, fish, shells, insects, spiders and birds.



Aotearoa in bloom – The history, culture and practical uses of New Zealand's flowers. By Rachel Clare & Tryphena Cracknell.



Manaka Mai – A celebration of plants from Rekohu & Rangihau, the Chatham Islands. Edited by Susan Thorpe.

MERCH: The National Wilding Conifer Control Programme (thanks to Leigh Strange) has promised us some cool merch.

HANDCRAFTED: Catherine Beard has promised a couple of handmade wooden utility items, which will include a story of where the recycled or discarded timber used has come from, simply awesome!

Louise Webster of Cycled Ceramics, Christchurch has donated a completely unique creation titled *Ode to Trilepidea adamsii*, a ceramic work honouring one of Aotearoa New Zealand's extinct native



plants. It uses fragile vessels, hand-formed leaves and classification labels to trace the plant's movement from At Risk, to Threatened, to Extinct. The work reflects Louise's broader practice of using ceramics to tell stories about environmental loss, human impact and the urgent need to care for our fragile ecosystems. Its inclusion in the NZPCN charity auction feels especially fitting, as proceeds support plant conservation through the David Given Scholarship and the John Sawyer Plant Conservation Fund. In case you might be thinking that sounds familiar, our NZPCN logo and the newsletter you are reading is also an ode.

Handcrafted spoons like what Catherine Beard has promised for auction.



***Ode to Trilepidea adamsii***

A set of ceramic creations by Louise Webster the founder of Cycled Ceramics, Christchurch.

If you would like to donate an item or two towards this year's, auctions please contact me (email up top) and I can give you a Wellington address to send to, or we can discuss it coming with you to the conference, whatever works for you. We will happily accept anything that may be useful, decorative, dreamy, warm, smelly, you name it!! We are now only a few months away, so the sooner you donate, the more I can thank you in this column!

## Regional Threat Classification System (RTCS) manual

*Philippa Crisp, Scott Jarvie, Sabine Melzer, Pascale Michel and Roger Uys*

Regional councils and Te Papa Atawhai/ Department of Conservation (DOC) have recently released a new publication about assessing the conservation status of species at a regional scale. The Regional Threat Classification System (RTCS) was developed to improve our knowledge of local species distribution and capability to better protect native biodiversity from extinction.

DOC is the agency tasked with managing selected indigenous species under the Wildlife Act 1953, Reserves Act 1977, Conservation Act 1987 and Native Plants Protection Act 1934, but regional and district councils have statutory obligations to maintain indigenous biodiversity under the Resource Management Act 1991 (RMA), including to manage the habitats of threatened species.

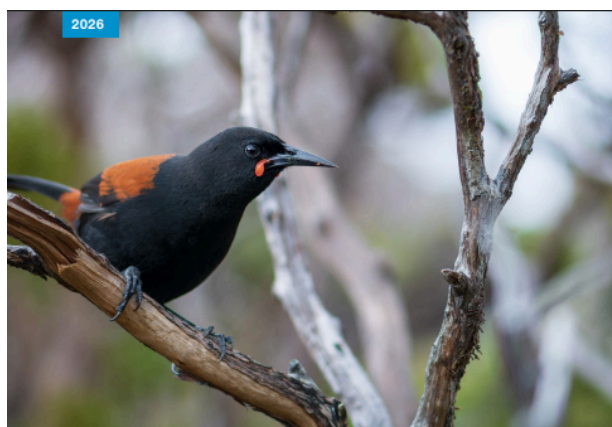
Nationally, the New Zealand Threat Classification System (NZTCS) is used to assess the conservation status of organisms found in the wild within the country's boundaries. Panel of experts undertake species assessments and DOC administers the process on behalf of all New Zealanders. The NZTCS uses a rules-based approach to assess species' risk of extinction based on estimates of population size and trend. While the NZTCS is effective at the national level, it can overlook situations where taxa are under greater pressure locally. This information is essential to prioritise conservation actions at smaller scales, such as within regions or districts.

The RTCS is designed for assessing the conservation status of organisms within Aotearoa New Zealand's sixteen geopolitical regions. It is an extension of the NZTCS, using the same categories, status rankings and criteria, adjusted to account for smaller regional scales. Panels of experts undertake regional assessments, and the process is administered by regional and districts councils. The first version of the RTCS manual has been recently published in April 2026. This manual provides guidelines on how to use the RTCS, outlining processes by which candidate taxa and informal entities must be listed.

Our hope is that the RTCS can contribute significantly to the understanding of the status and trends affecting indigenous biodiversity in Aotearoa New Zealand. Potential benefits from assessing threats to indigenous species at a regional scale as well as the national scale include:

- Improved knowledge of the status of species across the landscape,
- Direction for local government and community groups to prioritise conservation actions that complement and support DOC's work,
- An improved ability to protect species through regulatory processes, and
- Improved national conservation assessments of species through greater local input.

Several regional councils have already published regional conservation statuses. These include for indigenous vascular plants in the Wellington Region (Enright et al. 2025), Auckland Region (Simpkins et al. 2025), and Otago Region (Jarvie et al. 2026), with these lead councils also publishing assessments



### Regional Threat Classification System of Aotearoa New Zealand, manual 2026

Philippa Crisp, Scott Jarvie, Sabine Melzer, Pascale Michel and Roger Uys



for various other groups of taxa. We are also aware of several other regional councils currently in the process of preparing regional conservation status assessments for various groups of taxa.

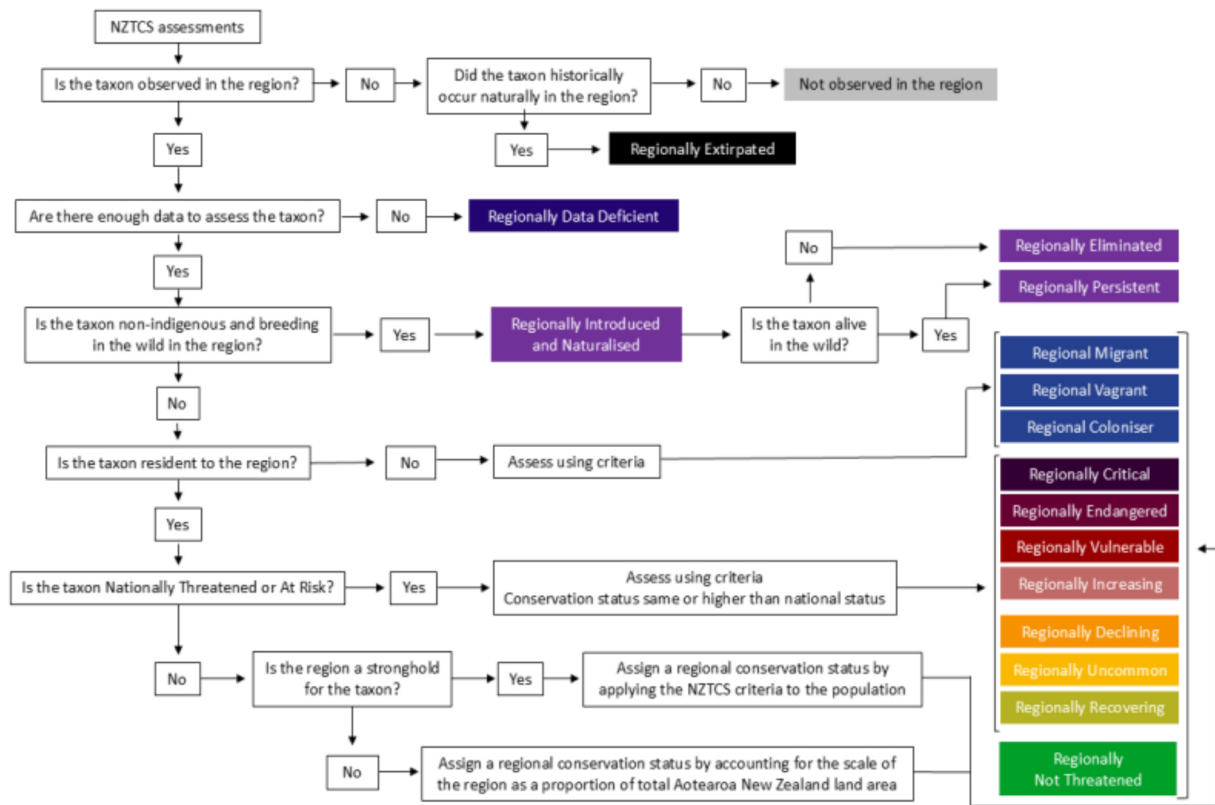


Figure 2.2 from the Regional Threat Classification System manual: Flow chart for regionally assessing taxa that are found in the wild in Aotearoa New Zealand.

To find out more about the RTCS, you can download the manual from the DOC website [here](#). To read already published regional conservation statuses, the citations are:

Enright P, Benbrook A, Crisp P, Dillon J, Park T, Perrie L, Rolfe J, Shepherd L, Smith R, Spearpoint O, Uys R, Ward M. 2025. Conservation status of indigenous vascular plants in the Wellington region. Wellington: Greater Wellington Regional Council. Publication No. GW/KI-T-25-31. <https://www.gw.govt.nz/document/23939/conservation-status-of-indigenous-vascular-plants-in-the-wellington-region/>

Jarvie S, Barkla J, Rance B, Rogers G, Ewans R, Thorsen M. 2026. [Regional conservation status of indigenous vascular plants in Otago](#). Dunedin: Otago Regional Council. Otago Threat Classification Series 12.

Simpkins E, Woolly J, de Lange P, Kilgour C, Cameron E, Melzer S. 2025. Conservation status of vascular plant species in Tāmaki Makaurau / Auckland. Revised March 2025. Auckland: Auckland Council. Auckland Council technical report, TR2025/6. <https://www.knowledgeauckland.org.nz/publications/conservation-status-of-vascular-plant-species-in-tamaki-makaurau-auckland-revised-march-2025-species-list/>

We greatly appreciate the efforts of Jeremy Rolfe, who led the development of this systematic approach to assessing the regional conservation status for indigenous species. His work has enabled the completion of a nationally consistent methodology that can be used by regional councils. Thank you to both Jeremy and Rod Hitchmough for their review of this manual. We also thank all who have been involved in testing the RTCS methodology and who have been on expert panels for the various taxonomic groups assessed already in the regions.

## NZPCN Plant Conservation Awards – Nominations Open

Jo Smith ([joannak.smith@outlook.com](mailto:joannak.smith@outlook.com))

Do you know someone making an outstanding contribution to native plant conservation in Aotearoa? The NZPCN Plant Conservation Awards are an opportunity to recognise and celebrate the people, groups, schools, councils, nurseries, and young conservationists helping to protect our indigenous flora.

Presented biennially at the NZPCN Conference, the awards acknowledge excellence, dedication, and leadership in plant conservation across a range of categories, including Individual, Community, School, Council, Plant Nursery, and Young Plant Conservationist of the Year.

Anyone can make a nomination - you do not need to be an NZPCN member - and multiple nominations across different categories are encouraged.

Award recipients will be announced at the [2026 NZPCN Conference in Whanganui-a-Tara/Wellington](#).

Nominations close on 31 August 2026.

To submit a nomination, please complete the [nomination form](#) and send it to Awards Co-ordinator Jo Smith at [joannak.smith@outlook.com](mailto:joannak.smith@outlook.com) with the subject line: NZPCN Award Nomination.

## Obituary: Dr Kelvin Lloyd, 05 January 1968 – 12 December 2025

*William Lee, Willie Shaw and Sarah Beadel*

It is our privilege to prepare an obituary for Dr Kelvin Lloyd. We have known Kelvin for many years, Bill since Kelvin enrolled in Otago University in the 1990s and Sarah and Willie since he joined Wildlands (Wildland Consultants) in December 2003.



Kelvin started university studies in Dunedin as a “mature” student in the 1990s, following travels around New Zealand and overseas and an upbringing in rural Northland. Bill suspected that Kelvin was drawn to our southernmost university by the endless tramping opportunities nearby in the Alps and particularly Fiordland. Kelvin focussed on botany and ecology as an undergraduate,

and excelled as a student, mentored by his teachers, the late Professors Bastow Wilson and Peter Bannister, and Sir Alan Mark.

For a third-year project Kelvin established a network of permanent plots in Awakiki Bush, a small remnant of rare eastern lowland podocarp forest near Balclutha, where he gained many insights into forest ecology. This was a formative experience for Kelvin, because for a while Awakiki Bush seemed to always surface during discussions on any topic in ecology!

Kelvin followed this with a PhD at the University of Otago comparing the ecology of rare and common species, and a post-doc with Manaaki Whenua – Landcare Research, Ōtepoti Dunedin, exploring the origin and evolution of indigenous grasslands. In late 2003, Dr Ralph Allen (the incumbent Wildlands Dunedin ecologist at that time) recommended Kelvin as the perfect fit for his replacement. Kelvin then embarked on a career as an ecologist with Wildland Consultants, expanding their Dunedin office and South Island presence.

Kelvin’s ever increasing academic knowledge at university was greatly enhanced during his epic tramps and explorations across western Otago and Southland. The integration of his university

studies, wide field experience, and desire to see indigenous ecosystems appreciated and preserved, transformed Kelvin into an exemplary botanist and ecologist, knowledgeable about plant distributions, community ecology, and the key environmental gradients that shape our biodiversity.

Ecological consultants exist in a challenging world where client interests, project requirements, and environmental parameters frequently jostle for priority. Through his insights, intellect and personality, Kelvin managed to navigate and negotiate better outcomes for indigenous ecosystems, while maintaining the respect of clients. He excelled in preparing concise, informative, and ecologically insightful reports on diverse projects. In some cases, he also provided expert evidence to the Environment Court, Boards of Enquiry, and Special Tribunals for various agencies and territorial authorities. In the Environment Court his expert opinions were greatly appreciated by officials, and Kelvin raised the standard of evidence now required in the Environment Court generally, especially around the application of robust ecological theory and astute awareness of the tolerances and functioning of indigenous ecosystems.

As many of us know, writing and presenting evidence in the Court involves effort, stress, caution, and insight to let the ecological evidence speak for itself, often on topics where impacts and outcomes are somewhat speculative because ecological analysis involves multiple contingent variables. Some of the major contributions Kelvin has made as an ecologist include modelling impact of wilding conifer spread, mapping potential ecosystems in Southland and Otago, delineating actual wetlands in Otago, developing biodiversity strategic plans, significance criteria and vegetation clearance rules for regional councils, and developing methods for assessment and monitoring of vegetation and fauna, and much more.

At the project level, Kelvin was involved in subdivision plans, farming developments, marinas, landfills, reservoir construction, hydro and wind power generation, roading applications, and restoration projects. To all these Kelvin applied his considerable expertise to get the best possible outcomes for the indigenous flora and fauna.

At Wildlands, over more than two decades, Kelvin made an extraordinary contribution to the profile and outcome of ecological consultancy in Aotearoa New Zealand. His expertise, commitment, and leadership shaped countless projects and supported the development of many within the team of ecologists at Wildlands. His deep knowledge, steady professionalism, and passion for his field earned immense respect, and the promotion to Senior Principal Ecologist. The Wildlands staff greatly appreciated Kelvin for his years of service, his expertise, and the positive impact he had on his colleagues and communities. His contributions will not be forgotten, and he is missed.

In Dunedin, Kelvin was an active supporter of the Orokonui Ecosanctuary since its inception in 2007 and contributed to local biodiversity conservation through setting aside a forested area on the family farm above Blueskin Bay. The control of weeds and pests here and elsewhere contributes to the Halo Project, a Predator Free NZ initiative designed to extend ecosystem benefits from Silver Peaks to the sea. Remeasured after eight years, Kelvin's vegetation plots established in the early phase of Orokonui were used in 2017 to provide amongst the first published evidence that an intensively-managed wildlife reserve can significantly restore populations of threatened flora (bird dispersed plants) and fauna (frugivorous birds) and extend conservation benefits into wider landscapes—the spillover effect we had all hoped for.

Kelvin's life and work were embedded in the enjoyment, understanding, and conservation of Aotearoa New Zealand's special indigenous flora and fauna. He achieved gains in a challenging environment, across multiple agencies, and at a national scale. His talks about our native flora at conferences, public meetings, and to clients and agencies, broadened support and enthusiasm for conservation across Aotearoa New Zealand. Kelvin knew his plants in their natural setting, where they grew and who were their neighbours. Bill remembers once discussing how best to travel across a wetland based on the microhabitats of different species, which were the reliable stepping stones and which ones were merely floating on hidden, deep water.

Kelvin had a persistent intelligence and rarely gave up on a solid idea or a task he valued. He delighted in discussing different perspectives about factors controlling plant distributions or boundaries between different communities or the main drivers of ecosystems or the relevance of the history of Aotearoa NZ, and Kelvin would always have a thoughtful view continually informed by things he had seen in the field. He was often hard to disagree with because he would always argue his point by reference to some site in a remote area that hardly anyone else had ever been to.

Kelvin's local conservation work started with trips to the Catlins with distinguished botanist Sir Alan Mark to plant trees and subsequently he was involved in the Dunedin Forest and Bird branch's project to tackle wilding pines across Otago. A keen tramper, he was also a member of the national executive of Federated Mountain Clubs for five years and a Trustee of Otago Natural History Trust for 15 years during the period the trust's Orokonui Ecosanctuary proposal was developed and turned into reality.

Kelvin lived with his family on a lifestyle block north of Ōtepoti Dunedin and owned a small farm nearby where they have covenanted about 30ha of native forest. They planted thousands of native trees on the farm and fenced off a wetland and filled it with harakeke.



Kelvin was generous in sharing his knowledge and treated others with kindness and respect. His experience, enthusiasm, reliability, and communication skills make him a stand-out amongst botanists in Aotearoa New Zealand. As a science communicator, Kelvin had mastered the art of taking complex scientific information and making it accessible to everyone.

In 2025 Kelvin was awarded the Old Blue award and the Loder Cup. The Forest & Bird prestigious Old Blue was awarded to Kelvin for his outstanding work protecting and enhancing Aotearoa New Zealand's natural treasures. The Loder Cup is one of Aotearoa New Zealand's highest honours for conservation and is presented annually by the Minister of Conservation and recognises outstanding achievements in protecting and promoting our unique indigenous flora. Kelvin was nominated by Forest & Bird for his scientific expertise and unwavering commitment, which has made a tangible difference to the protection of Aotearoa New Zealand's native plants.

Kelvin was kind, curious, and a generous person who deeply loved his family, had many friends, and enriched our lives with his conversation, his humour, his support, his passions and his insights. He is greatly missed by the ecological and conservation community.

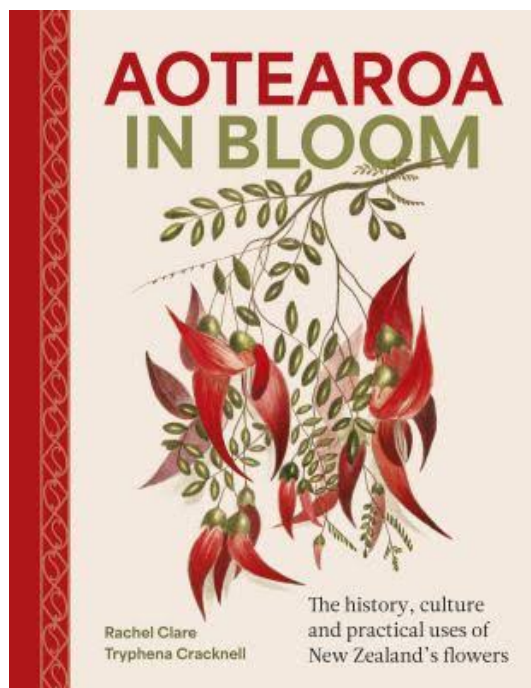
## Book review – *Aotearoa in Bloom* by Rachel Clare and Tryphena Cracknell

Reviewed by Bill Campbell ([billcampbell@xtra.co.nz](mailto:billcampbell@xtra.co.nz))

Published in late March 2026, *Aotearoa in Bloom* sets out to provide the reader with insights into the history, culture and practical uses of New Zealand's flowers. Its 287 pages are filled with high quality and interesting illustrations and the large, easy to read, text is written in such a way as to engage even those who are not particularly botanically minded.

When reading, it soon becomes clear that a considerable amount of research has gone into putting this hardcover publication together, although the authors note that due to space limitations there was much more they couldn't include. Maori, anecdotal, and scientific information is woven together in such a way as to make *Aotearoa in Bloom* a read that is hard to put down. Each page reveals new secrets and adds to one's knowledge of our flowering native plant species.

The illustrations, easy to read text and botanically accurate yet fairly informal writing style make this a book well worth buying for anyone interested in knowing more about New Zealand's native flowering plants, whether they be botanists, gardeners or just general native plant enthusiasts. *Aotearoa in Bloom* can be purchased from a number of retailers, including online, at prices ranging from \$47.00 to \$60.00.



### Reference

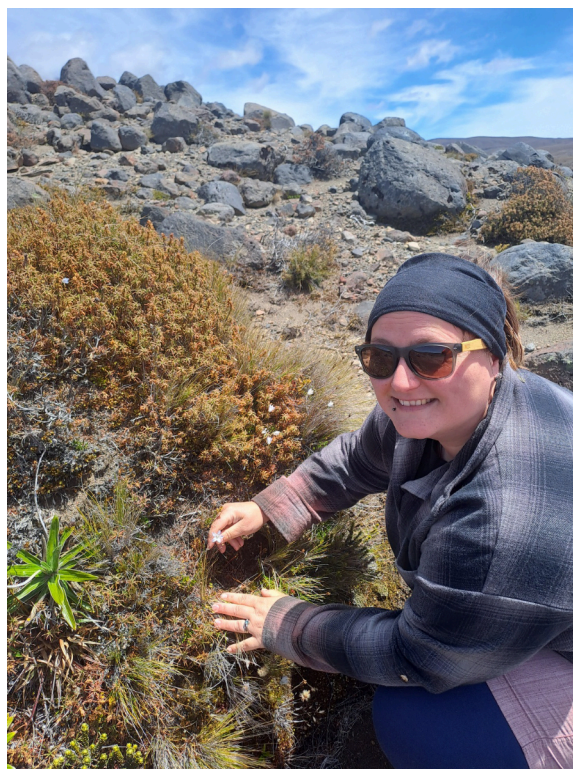
Clare, R., & Cracknell, T. (2026) *Aotearoa in Bloom: A history, culture and practical uses of New Zealand's flowers*. HarperCollins Publishers. ISBN: 978-12-7755-4268-1.

### Introducing NZPCN Council Member Megan Ireland

I've known I wanted to be a gardener since I was a child growing up in Derbyshire, England. I completed a BSc in Horticulture before working in a variety of gardens across the UK.

Working at Abbey Garden, Tresco first introduced me to the unique and diverse flora of Aotearoa New Zealand. Inspired to learn more, I moved to New Zealand and eventually specialised in native plants at Ōtari Native Botanic Garden in Wellington.

I love exploring Aotearoa and botanising in the wild. At Ōtari, I particularly enjoy working with native species through horticulture conservation projects, propagation, and in the garden. I'm passionate about supporting plant conservation in Aotearoa and sharing knowledge to help protect our unique native flora.



## Species lists for lichens and lichenised fungi, mosses, liverworts and hornworts in the Otago Region

Scott Jarvie, Petra Campbell and Aimee Pritchard

Working with lichenologist Petra Campbell and bryologist Aimee Pritchard, both from the Department of Botany – Te Tari Huaota, University of Otago – Ōtākou Whakaihu Waka, the Otago Regional Council (ORC) has had species lists compiled for lichens and lichenised fungi, mosses, liverworts and hornworts found in the Otago Region.

Following the taxonomic names from the national checklists, we identified over 1180 lichens and lichenised fungi, over 350 mosses, over 350 liverworts, and seven hornworts. To our knowledge, this is the first time species lists have been compiled at the regional level for these groups in Aotearoa New Zealand.

In the species list, information is provided for taxa on the functional group, the report name from the New Zealand Threat Classification System if assessed nationally, the national conservation category and status if assessed, distributions, endemism including at national and regional-scales, nativeness, the source of the distribution information as well as the confidence of the species being in the region, and if a type locality is in Otago. The species lists are available on the ORC webpage: lichens and lichenised fungi are found [here](#), and mosses, liverworts and hornworts are found [here](#).

We thank the following researchers from Bioeconomy Science Institute, formerly Manaaki Whenua – Landcare Research, for support with these lists: Dr Jerry Cooper for advice on type localities, Dr Aaron Wilton for advice on the Global Biodiversity Information Facility, Dr David Glenny for advice on bryophytes. We also thank Marley Ford, independent ecologist, and Allison Knight, research associate at University of Otago – Ōtākou Whakaihu Waka, for their advice, and Dr Matthew Larcombe from the University of Otago – Ōtākou Whakaihu Waka for support.



Figure 1. *Ramalina celsa*. Photo: Nicola Baines.



Figure 2. *Weymouthia mollis*. Photo: Aimee Pritchard.

## UPCOMING EVENTS

If you have events or news that you would like publicised via this newsletter please email the Network ([info@nzpcn.org.nz](mailto:info@nzpcn.org.nz)), prior to the published copy deadline, with details of meetings, field trips or other events taking place during the following month or later. The deadline for copy for the following month's *Trilepidea* is at the top of the front page of each issue.

If you intend to participate in one of the advertised botanical society meetings or field trips, please check with the relevant society beforehand to confirm that the published details still stand.

### NZPCN 2026 Conference

The NZPCN 2026 Conference will be held in Te Whanganui-a-Tara/Wellington, 12–15 October 2026. Mark these dates in your diary now for an exciting few days of botanical knowledge sharing, networking and local exploration. More information will be included in future issues of *Trilepidea*, as details are finalised.

### 15th Australasian Plant Conservation Conference (APCC15), Port Douglas – QLD, 24-28 August 2026

**Theme:** 'Plant Conservation: Culture, Collaboration and Change'

APCC15 will explore these three spheres of native plant recovery through rainforest restoration partnerships, collaborations with Traditional Owner groups, impacts of climate change induced natural disasters, management of threatened species and communities, and biosecurity threats such as Myrtle Rust. The conference will bring together from across the continent, people researching, working, or volunteering in plant conservation to address the challenges facing Australasia's spectacular and diverse plant life, through information exchange and sharing best practice approaches. There will also be numerous workshops, social events and field trip options, which you can find more info on at the conference website. Don't miss out to be a part of the first edition of APCC to be held in the Wet Tropics, right on the doorstep of the Daintree.



The banner features the text 'APCC15' in large green letters, '15th Australasian Plant Conservation Conference' in orange, and 'Culture, Collaboration and Change' in white. It also includes the dates '24-28 Aug 2026' and location 'Port Douglas, QLD'. A stylized green plant with orange flowers is on the right.



A collage of photos showing conference attendees, presentations, and a person holding a 'STRAIGHT OUTTA COMPTON' t-shirt.

**Collaborations and Culture**  
**Sustaining Diversity**  
**Restoring Balance**  
**Biosecurity, Invasive Threats and Post-Invasion Challenges**

**SUBTHEMES**

Plant Conservation Australia  
Jointly organised by  
ATH Australian Tropical Herbarium

Abstract submission open - closing May 1  
Early bird registration open  
(Regular prices commence May 30)



Scan to learn more and register

<https://www.anpc.asn.au/conferences-apcc15/>

---

## 38th John Child Bryophyte and Lichen Workshop – Rotorua

---

**Thursday 12 November – Tuesday 17 November, 2026**

**Organiser:** Anne Redpath, [annepathred@gmail.com](mailto:annepathred@gmail.com)

**Where:** Wai-o-tapu Camp, Old Waiotapu Rd, Kaingaroa Forest. The Wai-o-tapu camp has a interesting history. Check out their website, [www.waiotapucamp.org.nz](http://www.waiotapucamp.org.nz). The camp is close to Kerosene Creek, a free shallow warm water creek popular with tourists.

**When:** From Thursday 12th November afternoon (dinner included) to Tuesday 17th morning (breakfast included). The timing of this workshop is an attempt to co-ordinate with the conclusion of University exams.

**Who:** The workshop is open to anyone interested in bryophytes and lichens from novices, amateurs to professional botanists. The aim is to gain and share knowledge of, and to encourage an interest in the mosses, liverworts, hornworts and lichens of New Zealand. Regular attendees are friendly and willing to help beginners. Microscopes will be available to share.

**Accommodation:** The accommodation is a series of independent huts with separate toilet and shower blocks. Each hut sleeps 2-6 in beds or bunks. You will need to bring a sleeping bag and pillow. Some bedding will be available. The hall, dining room and kitchen facilities will be more than adequate for our group. Internet & cell phone available. More details about the accommodation will be sent in later newsletters to those who will be attending. Other accommodation is available in Rotorua.

**Meals:** We will make our breakfasts and lunches from food provided. Dinner provided. An attempt will be made to cater for dietary requirements, but those with specific diets may wish to bring their own food.

**Daily Field Trips:** Will be in groups to various reserves in the region, shared vehicle transport will be used. You will need to bring suitable clothing and footwear for all the different weather types NZ can produce.

**Getting there:** Rotorua is a major tourist town with plenty of flight and bus options. Pick ups and transport to the camp will be arranged later.

**Costs:** We attempt to keep these as low as possible. Accommodation costs will be around \$25 per person per night. Food costs will be determined at the end of the workshop and passengers will contribute to shared vehicle costs. A deposit will be asked for closer to the time.

**Tom Moss Award:** Students who give a 15-minute talk at the workshop are eligible for this award. The best speaker receives a monetary award.

**Mailing List:** Hopefully this mailing list is going to the right people. Please pass this circular on to whoever you think might be interested.

---

## Auckland Botanical Society

---

**Meeting:** Wednesday 3 June at 7.30pm. **Speakers:** Elizabeth Williams and Yumiko Baba. **Topics:** Forest succession on rainfall-driven landslides in the Hauraki Gulf region and the alpine flora of Mt Tateyama, Central Japan.

**Venue:** Unitec, School of Natural Sciences, 139 Carrington Road, Mount Albert, Auckland. Gate 4, Building 115, Room 2005, Level 2.

**Field Trip:** Saturday 20 June to Leigh Marine Reserve bush walk.

**Leader:** Maureen Young.

---

## Waikato Botanical Society

---

**Field Trip:** Sunday 7 June to Patetere Scenic Reserve, Cecil Road, Mamaku. (Combined with Rotorua Botanical Society). **Meet:** Rotorua carpark at 9.00am or at the end of the seal on Cecil Road at 9.30am. **Grade:** Easy-Medium.

**Leader:** Rob Fairley, email [rafchch@gmail.com](mailto:rafchch@gmail.com), ph. 021 0247 7614.

**Meeting:** Monday 15 June at 6.00pm. **Speaker:** Cathy Rogers. **Topic:** Comparison between NZ native plants and South African plants.

**Venue:** The Link Centre, corner Te Aroha Street and River Road.

---

## Rotorua Botanical Society

---

**Field Trip:** Sunday 7 June to Patetere Scenic Reserve, Cecil Road, Mamaku. (Combined with Waikato Botanical Society). **Meet:** Rotorua carpark at 9.00am or at the end of the seal on Cecil Road at 9.30am. **Grade:** Easy-Medium.

**Leader:** Rob Fairley, email [rafchch@gmail.com](mailto:rafchch@gmail.com), ph. 021 0247 7614.

---

## Wellington Botanical Society

---

**Field Trip:** Saturday 13 June to coastal escarpment edge at Whitireia Park.

**Meeting:** Monday 15 June at 7.30pm. **Speakers:** Lara Shepherd, Science Researcher, Te Papa and Leon Perrie, Botany Curator, Te Papa. **Topic:** The amazing flora of Lord Howe Island.

**Venue:** Victoria University, Wellington, Lecture Theatre M101, ground floor Murphy Building, west side of Kelburn Parade.

---

## Nelson Botanical Society

---

**Field Trips/Meetings:** Please refer to the website: <https://www.nelsonbotanicalsociety.org/trips-meetings>.

---

## Canterbury Botanical Society

---

**Field Trips/Meetings:** Please refer to the website: <https://canterburybotanicalsociety.org.nz/canterbury-botanical-meetings-field-trips> for current details.

---

## Botanical Society of Otago

---

**Meeting:** Wednesday 10 June at 5.20pm. **Topic:** AGM and photo competition.

**Contact:** Jo Sinclair.

**Field Trip:** Saturday 13 June to Grahams Bush track. **Meet:** Botany carpark at 9.00am.

**Leader:** Gretchen Brownstein, ph. 021 065 8497.

---