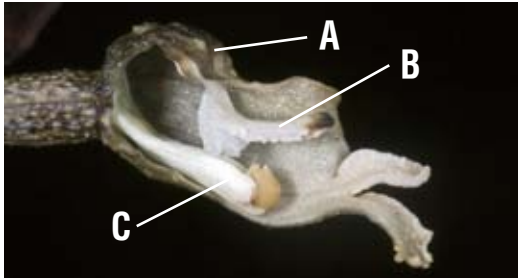


Guide to New Zealand *Gastrodia* (Orchidaceae)

Jeremy Rolfe jrrolfe@actrix.co.nz January 2010

Anatomy of a *Gastrodia* flower

Significant identification features are the texture of the perianth (is it tuberculate (warty) or smooth?), the apex of the labellum (is it yellow or brown to black?), and the length of the column (is it very short and therefore not visible, or is it long and its apex visible below the apex of the labellum?).



A: Perianth (petals and sepals collectively, which in *Gastrodia* are fused into a tube)
 B: Labellum
 C: Column

Photo shows *Gastrodia* "long column black" with half the perianth removed to expose the labellum and column.

Identification key

- | | | |
|----|---|---|
| 1a | Flowering stems >30 cm tall; flowers usually >10 per stem; perianth >15 mm long | 2 |
| 1b | Flowering stems <30 cm tall; flowers <10 per stem; perianth <12 mm long | <i>Gastrodia minor</i> |
| 2a | Perianth tuberculate | 3 |
| 2b | Perianth smooth, pale; labellum apex yellow | <i>Gastrodia</i> aff. <i>sesamoides</i> |
| 3a | Labellum apex yellow | <i>Gastrodia</i> "long column" |
| 3b | Labellum apex brown-black | 4 |
| 4a | Column much shorter than labellum, not visible in intact flower | <i>Gastrodia cunninghamii</i> |
| 4b | Column ± length of labellum, apex usually visible in intact flower | <i>Gastrodia</i> "long column black" |

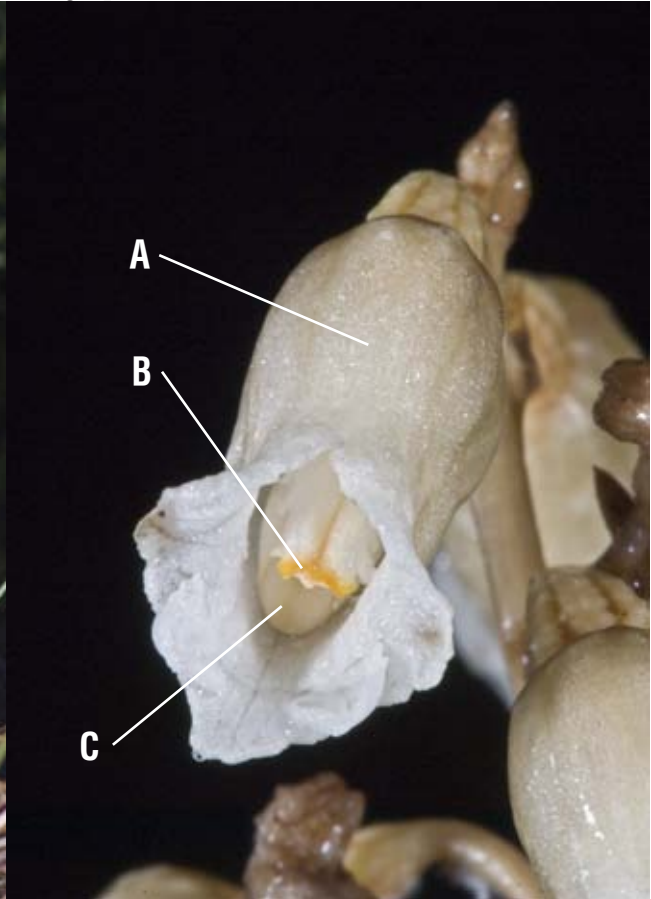
Gastrodia minor

This species is very distinctive, being smaller and having fewer flowers than other gastrodias.



Gastrodia* aff. *sesamoides

A: perianth smooth; B: labellum apex yellow; C: column long, apex visible.



***Gastrodia* “long column” (possibly an aggregate of several related entities)**

A: perianth tuberculate; B: labellum apex yellow; C: column long, apex visible.

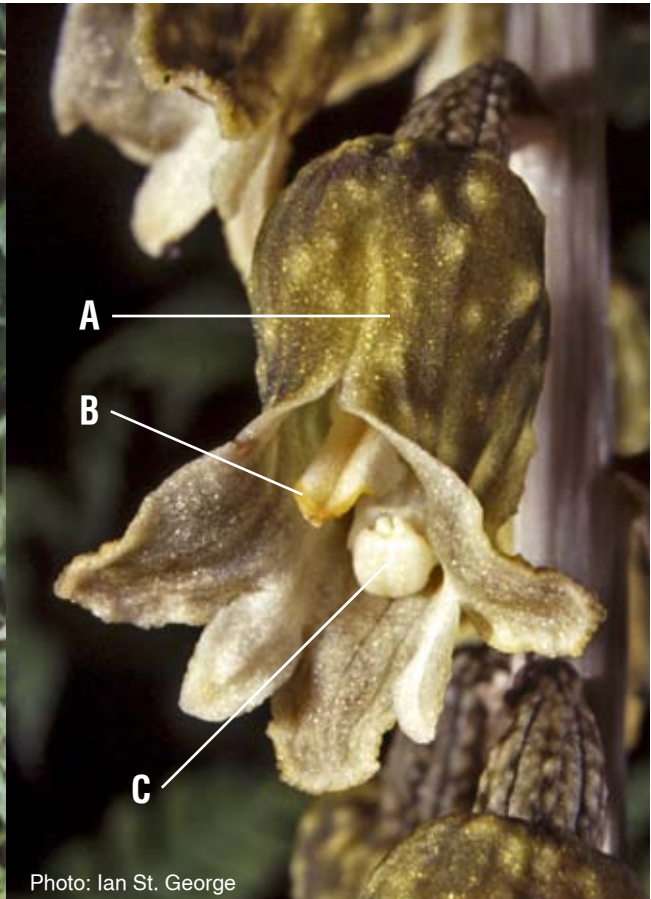
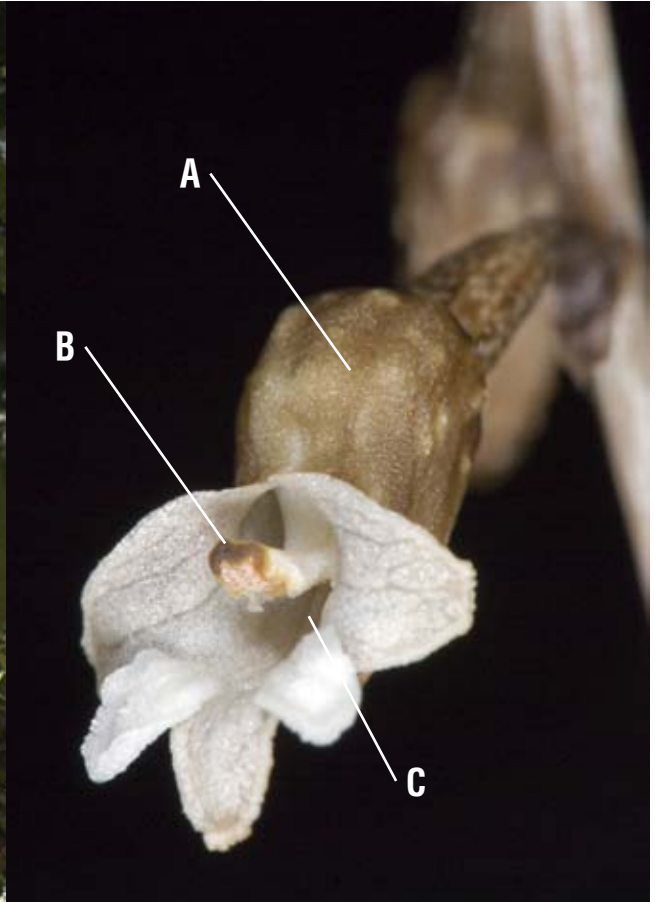


Photo: Ian St. George

Gastrodia cunninghamii

A: perianth tuberculate; B: labellum apex brown or black. C: column short, apex not visible.



***Gastrodia* “long column black”**

A: perianth tuberculate; B: labellum apex black; C: column long, apex visible.

