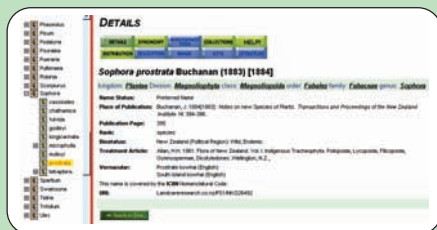


Ngā Tipu o Aotearoa - New Zealand Plants



This website provides over 30,000 scientific and 10,000 Māori and vernacular names of plant taxa that are relevant to New Zealand. This site provides information for seed plants, mosses, liverworts, ferns, lichens and freshwater algae.

- synonymy of scientific names
- search function (including by scientific, Māori and vernacular name)
- images of plants
- collection data from the Allan Herbarium specimen database
- biostatus data (origin and occurrence)
- distribution maps
- systematic literature
- site updated weekly
- data also available as a webservice



Flora of New Zealand Series was funded by the Terrestrial and Freshwater Biodiversity Information Systems (TFBIS) Programme.

Ngā Tipu o Aotearoa is funded by the Foundation for Research Science and Technology. The data are maintained in collaboration with Te Papa Tongarewa Museum of New Zealand and Canterbury University.

He Whanaketanga o Ngā Tipu o Aotearoa was funded by the Terrestrial and Freshwater Biodiversity Information Systems (TFBIS) Programme.



Manaaki Whenua
Landcare Research

Manaaki Whenua – Landcare Research

For more information visit our website

<http://www.landcareresearch.co.nz>

or email us at herbarium@landcareresearch.co.nz

New Zealand's Flora



online resources



Manaaki Whenua
Landcare Research

Ngā Tipu o Aotearoa
- New Zealand Plants
Manaaki Whenua - Landcare Research DATABASES



Manaaki Whenua
Landcare Research

<http://nzflora.landcareresearch.co.nz>



Volumes 1 to 5 of the Flora of New Zealand are now available online.

This series is an important resource – providing an authoritative synthesis of the state of knowledge of our unique New Zealand flora. Each volume provides information on the taxonomy, nomenclature and descriptive data for the taxa covered. The volumes also include information on the biology, distribution, and habitat preferences of the taxa, as well as illustrations, identification keys and other notes.

This electronic version reproduces the content of each of the five volumes as found in the printed version, but increases accessibility of information by cross-linking within the text and hyperlinking to Ngā Tipu o Aotearoa - New Zealand Plants.



- full content of Flora volumes 1 to 5
- full-scale plates, figures and maps
- search within or across volumes
- search by scientific and vernacular names
- hyperlinked names and keys
- linked to Ngā Tipu o Aotearoa (see overleaf)

1 Ultimate pinnules fan-shaped, with stalk attached ± centrally
 Ultimate pinnules ± oblong or parallelogrammoid, with stalk attached at one corner 2

2 Reflexed indusia oblong, lacking distinct sinuses 1. [*capillus-veneris](#)
 Reflexed indusia ± reniform, with distinct sinuses 3

3 At least some stalked pinnules divided into 2 or more distinct lobes; pinnules generally slightly longer than broad 2. [*raddianum](#)
 Stalked pinnules ± entire, incised only at sinuses of indusia, pinnules generally slightly broader than long 3. [*aethiopicum](#)

4 Reflexed indusia hairy 5
 Reflexed indusia glabrous 6

5 Fronds 1-pinnate, or 2-pinnate with usually a single pair of primary pinnae bearing secondary pinnae; young fronds green, rachis ± glabrous 5. [*diaphanum](#)

Fronds pedate [Flora of New Zealand : Indigenous Tracheophyta. M. : Taxa \(pages 1 - 285\)](#)

6 Midribs of pinnae Parent: [MONOCOTYLEDONES](#)
 Midribs of pinnae 5. [ZANNICHELLIACEAE](#)

7 Fronds 1-pinnate Monoc. or dicoc. Infl. of 1 to few minute unisexual fls enclosed within sheathing bracts. Per. 0 or represented by 3 membr. scales. Stamens solitary or 2-3, anthers 1-2-lobed, dehiscing longitudinally; pollen globular or threadlike. Carpels 1-3, free, sessile or shortly stipitate; style simple or 2-4-lobed; stigmas capitate to funneliform; ovule solitary, pend., strongly curved. Fr. beaked with persistent style-base, indehiscent. Seed without endosperm. Aquatic, rhizomatous, perennial, glab. herbs of fresh, brackish or salt water, us.

8 Fronds (3)-4-pinnate submerg. Lvs simple, narrowly linear, almost filiform, at, but st. crowded as though whorled; stipules sheathing or open, either free throughout or adnate to fl-base except for free ligule or auricles. Genera 6, one widespread in temperate waters.

1 Lvs in false whorls of 3-4; stipules free; ♂ and ♀ together within sheathing bracts 1. [ZANNICHELLIA](#)
 Lvs at, distant except at infl.; stipules adnate to fl-base, auriculate; ♂ and ♀ us. on separate plants, never within same fl-sheath 2. [LEPISARNA](#)

Fig 4. ZANNICHELLIACEAE: *Zannichellia palustris*: fruits; inflorescence; leaf tip. *Lepidiana biculata*: fruits; female inflorescence; female flower; male flower; male inflorescence; leaf tip.

Taxon Name Search

Taxon Types All Taxon Names Taxon Entries Only

WildCards Anywhere in Name ("...") Name Starts With ("...")

Volumes To Search All Volumes Current Volume

Search Taxon

GLOSSARY

abaxial :facing away from an axis, usually for lower-leaf-blade surface, but for all organs; hence abaxially.

abbreviated :shortened.

achene :a small dry indehiscent one-seeded fruit with a thin free pericarp, as in Pyrenthera.

acicular :slender, or needle-shaped.

acuminate :tapering to a fine point.

acute :sharply pointed.

adaxial :facing towards an axis, usually for leaf-blade, but for all organs; hence adaxially.

adherent :separate parts or organs touching or in union, but not fused.

adjacent :lying near, next to.

adnate :attached to or united to an organ of a different kind.

adventitious :arising from an unusual position, as of roots.

alpine :an altitudinal zone ± above 1400 m.

alternate :placed singly along an axis, not opposite or whorled.

anastomosing :joining to form a network, as of nerves or veins.

androecium :male organs of a flower, i.e. stamens with their filaments, and anthers.

anemophilous :wind-pollinated.

annual :completing life-cycle in one year.

anterior :on the side away from the axis and thus appearing at the front.



Partly because of its geographical isolation and the environmental heterogeneity, the flora of New Zealand is diverse and largely endemic. This website is based upon recent literature and attempts to depict the evolutionary relationships of New Zealand plants. It consists of a series of nested phylogenetic trees showing the earliest divergence of green algae and land plants to more recent spectacular adaptive radiations.

- linked to Ngā Tipu Aotearoa (see overleaf)
- recent phylogenetic literature
- navigate across phylogenetic trees
- search by name, literature or tree name images

