

RAP 35 Eastern Hawkesbay Ecological District "Mangaone Stream Bush"

owners G.I.&K.C. Martin, Box 25, Pongarua.

Site visits 11 November (very brief) and 7 December 1999
Aalbert Rebergen
Department of Conservation
Wairarapa Area

This RAP is a diverse tawa-titoki forest (with some small streams, gullies and wet areas), with a component of podocarp species, and an understorey dominated by *Coprosma areolata*, *C. rhamnoides*, *Melicytus micranthus*, *Lophomyrtus obcordata* and *Rakeaua anomalus*. The area is grazed, but there are no weeds! The canopy is closed and will allow for good regeneration after physical protection.

I had a talk with one of the owners (G.I. Martin), who told me that he is keen to have the forest physically and legally protected - he will discuss this with his brother.

I recommended a QEII Covenant to him and have since informed John Kirby (QEII Wairarapa representative).

During two short visits I compiled the following (woody) plant list (see below). Non-woody plants include *Arthropodium candidum*, *Australina pusilla*, *Ranunculus reflexus*, *Pratia angulata*, *Stellaria decipiens* and *Urtica incisa*.

The fern flora is species-poor and includes silverfern and *Asplenium flaccidum*.

Plant list (9 November and 7 December 1999 - brief search):

Trees, shrubs and climbers only

a=abundant, c=common, l=local, u=uncommon

<i>Alectryon excelsus</i>	titoki	a
<i>Beilschiedia tawa</i>	tawa	a
<i>Brachyglottis repanda</i>	rangiora	u
<i>Carpodetus serratus</i>	putaputaweta	c
<i>Coprosma areolata</i>		a
<i>C. crassifolia</i>		l
<i>C. rhamnoides</i>		a
<i>C. rigida</i>		l
<i>C. robusta</i>		u
<i>C. rotundifolia</i>		l
<i>Cordyline australis</i>	cabbage tree	u
<i>Dacrycarpus dacrydioides</i>	kahikatea	c
<i>Elaeocarpus dentatus</i>	hinau	u
<i>E. hookerianus</i>	pokaka	l
<i>Fuchsia perscandens</i>		l
<i>Geniostoma rupestre</i>	hangehange	u
<i>Hebe</i>		l
<i>Hobertia sextylosa</i>	lacebark	c
<i>Knightia excelsa</i>	rewarewa	u
<i>Kunzea ericoides</i>	kanuka	l
<i>Leptospermum scoparium</i>	manuka	l
<i>Lophomyrtus obcordata</i>		a

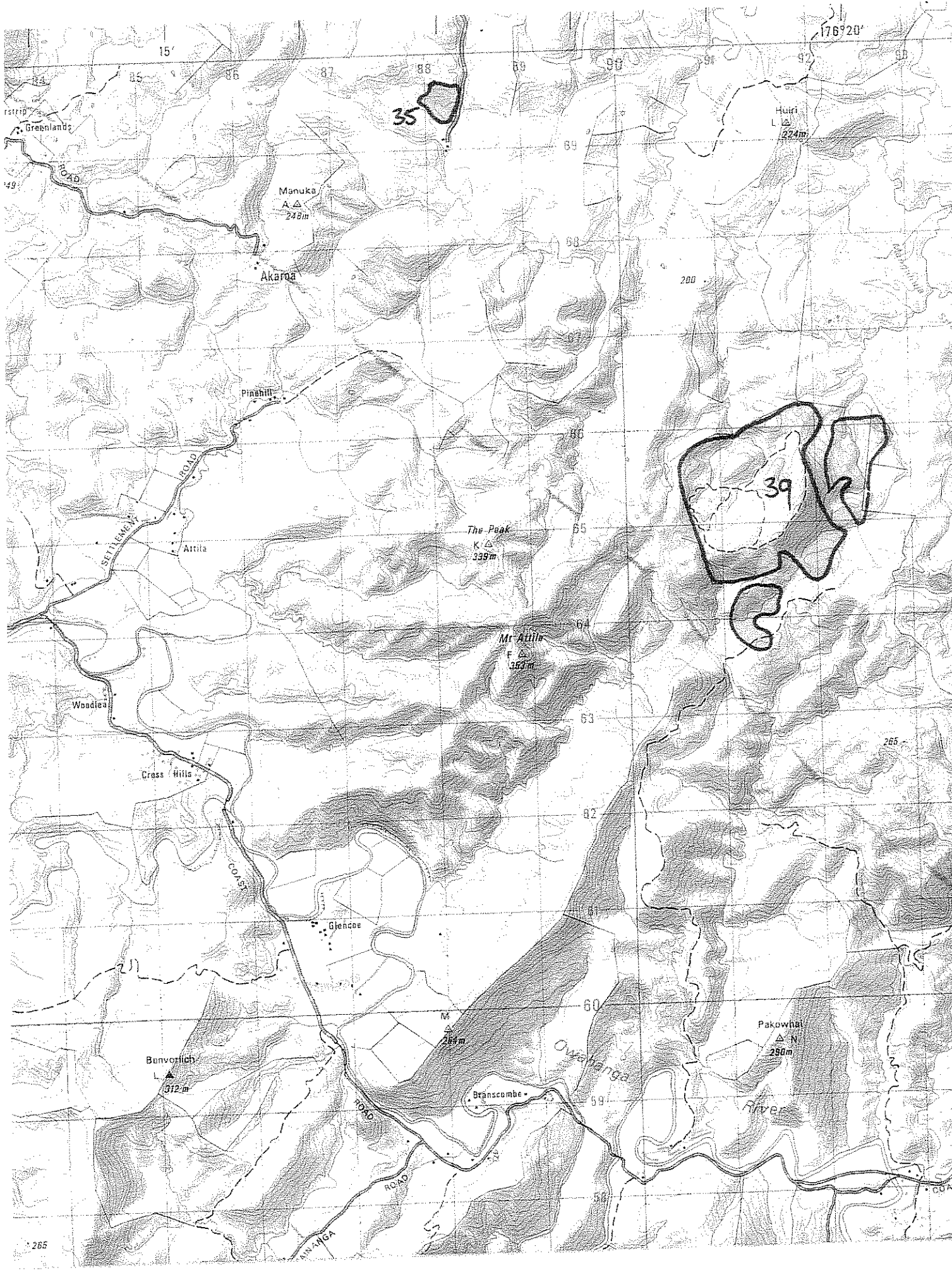
<i>Melicope simplex</i>		c
<i>Melicytus micranthus</i>		c
<i>M. ramiflorus</i>	mahoe	l
<i>Myrsine australis</i>	mapou	l
<i>M. divaricata</i>	weeping matapo	u
<i>Nestegis cunninghamii</i>	black maire	u
<i>N. lanceolata</i>	white maire	l
<i>N. montana</i>	narrow-leaved maire	u
<i>Permantia corymbosa</i>	kaikomako	c
<i>Pittosporum eugenoides</i>	lemonwood	u
<i>P. tenuifolium</i>		u
<i>Podocarpus totara</i>	totara	c
<i>Prumnopitys taxifolia</i>	matai	c
<i>Pseudopanax arboreus</i>	five finger	l
<i>P. crassifolius</i>	lancewood	c
<i>Rakaua anomalus</i>		c
<i>Sophora microphylla</i>	kowhai	u
<i>Streblus heterophyllus</i>		l

climbers

<i>Metrosideros colensoi</i>	
<i>M. diffusa</i>	
<i>M. perforata</i>	
<i>Muehlenbeckia australis</i>	
<i>Parsonia</i> sp.	
<i>Passiflora tetrandra</i>	kohia
<i>Ripogonum scandens</i>	supplejack
<i>Rubus schmidelioides</i>	

birds

tui
fantail
grey warbler
shining cuckoo
NZ kingfisher
harrier
Californian quail



176°20'

35

39

Greenland

Huiri L
224m

Manuka
A Δ
248m

Akaroa

Pinehill

The Peak
K Δ
339m

Mr. Atrila
F Δ
353m

Woodlea

Cross Hills

Glencoe

Benvorlich
L Δ
312m

M
284m

Branscombe

Pakowhai
N Δ
290m

Owhanga

River