

Juncus pauciflorus

COMMON NAMES

leafless rush

SYNONYMS

Juncus gunnii Hook.f., *J. pauciflorus* var. *gunnii* (Hook.f.) Buch. *Agathryon pauciflorum* (R.Br.) Záveská Drábková & Pročková

FAMILY

Juncaceae

AUTHORITY

Juncus pauciflorus R.Br.

FLORA CATEGORY

Vascular – Native

ENDEMIC TAXON

No

ENDEMIC GENUS

No

ENDEMIC FAMILY

No

STRUCTURAL CLASS

Rushes & Allied Plants

NVS CODE

JUNPAU

CURRENT CONSERVATION STATUS

2017 | Threatened – Nationally Vulnerable | Qualifiers: DP, SO, Sp

PREVIOUS CONSERVATION STATUSES

2012 | Threatened – Nationally Vulnerable | Qualifiers: DP, SO, Sp

2009 | At Risk – Declining | Qualifiers: DP, SO, Sp

2004 | Not Threatened

DISTRIBUTION

.Indigenous. North, South and Stewart Islands. Present in Australia

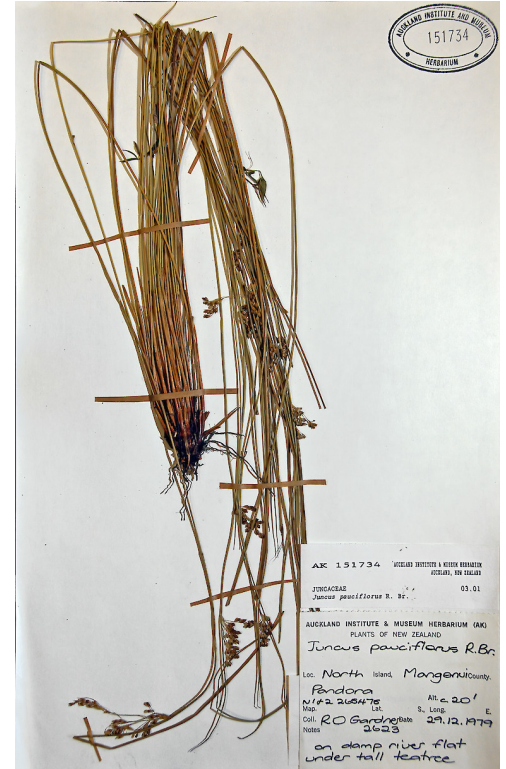
HABITAT

Coastal to lowland (often on northern offshore islands) in damp ground and hollows under light scrub, in pasture, on swamp margins, in dune swales under scrub or within coastal forest.

WETLAND PLANT INDICATOR STATUS RATING

FACW: Facultative Wetland

Usually is a hydrophyte but occasionally found in uplands (non-wetlands).



Herbarium specimen: AK 151734. Photographed with permission of Auckland Institute and Museum. Photographer: Jeremy R. Rolfe, Date taken: 23/10/2007, Licence: CC BY.



Herbarium specimen: AK 151734. Photographed with permission of Auckland Institute and

DETAILED DESCRIPTION

Slender, clumps with sprawling to almost lianoid stems spreading widely from base. **Rhizome** 2–3 mm diameter, horizontal, near surface or above ground, easily pulled from soil. **Flowering stems** 0.25–1.00 m long, 0.75–2.00 mm diameter, bright green to reddish green, smooth, glossy to lustrous, internal pith continuous; leaves absent; basal bracts very short, conspicuously dark red-brown, closely sheathing. **Inflorescence** apparently lateral, rather lax and open, with flowers evenly spaced, often rather remote, on slender, flexible, more or less curved branchlets. **Flowers** 2.5–3.0 mm long; tepals light greenish brown. **Stamens** 6. **Capsule** 2.5–3.5 mm long, usually distinctly > tepals, ovoid to almost oblong, light brown to red-brown, often very dark towards apex.

SIMILAR TAXA

The rather widely spreading, loose, almost floppy, lianoid, bright green stems and slender, flexible branchlets are especially distinctive. Because it has continuous pith and six stamens it usually keys out with *J. pallidus* R.Br., which is a very different, robust rush up to 2 m tall, with broad (3–8 mm diameter) erect, light green to glaucous, soft rather than wiry stems.

FLOWERING

November–January

FLOWER COLOURS

Brown, Green

FRUITING

November–April

LIFE CYCLE

Mucilaginous seeds are dispersed by attachment, wind and water (Thorsen et al., 2009).

PROPAGATION TECHNIQUE

Easy from fresh seed. Can be grown from rooted pieces and by the division of whole plants but resents root disturbance.

THREATS

Rather uncommon

ETYMOLOGY

juncus: From the Latin *jungere* 'to tie or bind', the stems of some species being used to make cord (Johnson and Smith)

pauciflorus: Few flowers

TAXONOMIC NOTES

Proćków et al. (2023) proposed a taxonomic segregation of *Juncus* into six genera based on molecular and morphological evidence. Whilst it has long been recognised that the current circumscription of *Juncus* includes morphologically divergent taxa—reflected in the recognition of numerous subgenera and sections—the consensus view of the NZPCN website taxonomy subcommittee, taking into consideration advice from Australian *Juncus* expert Dr Karen Wilson (NSW Herbarium) and others in Europe is that the generic segregations proposed need further consideration and testing. Accordingly, it has been decided to maintain the current broad circumscription of *Juncus*, but to include all new names as synonyms in factsheets. We thank, in particular, Dr Wilson for her helpful comments.

ATTRIBUTION

Moore, L.B.; Edgar, E. 1970: Flora of New Zealand. Vol. I. Government Printer, Wellington.

REFERENCES AND FURTHER READING

Johnson, A.T. and Smith, H.A. 1986: *Plant Names Simplified: Their pronunciation, derivation and meaning*. Landsman Bookshop Ltd: Buckenhill, UK.

Moore, L.B.; Edgar, E. 1970: *Flora of New Zealand*. Vol. I. Government Printer, Wellington.

Pročków, J., Záleská Drábková, L. 2023. A revision of the Juncaceae with delimitation of six new genera: nomenclatural changes in *Juncus*. *Phytotaxa* 622(1): 17–41.

Thorsen, M.J.; Dickinson, K.J.M.; Seddon, P.J. 2009: Seed dispersal systems in the New Zealand flora. *Perspectives in Plant Ecology, Evolution and Systematics* 11: 285-309.

MORE INFORMATION

<https://www.nzpcn.org.nz/flora/species/juncus-pauciflorus/>

PDF DATE

24 September 2024