

Eleusine tristachya

COMMON NAME

three-spiked goose-grass

FAMILY

Poaceae

AUTHORITY

Eleusine tristachya (Lam.) Lam.

FLORA CATEGORY

Vascular – Exotic

STRUCTURAL CLASS

Grasses

CONSERVATION STATUS

Not applicable

BRIEF DESCRIPTION

Tufted perennial grass to 20 cm tall; leaves folded with blunt boat-shaped tips. Inflorescence of 2-4 spikes, each with 2 rows of spikelets on one side.

DISTRIBUTION

Few records in NZ. Flora NZ Vol. 5: 524 gives Gisborne, Hastings, Whanganui + one early record from Wellington.

HABITAT

Waste areas - dry sand, gravel; lawns.

SIMILAR TAXA

Crowsfoot grass (*E. indica*) is an annual and is usually larger with inflorescences of (1-)2-8(-10) spikes

FLOWERING

January-February

FLOWER COLOURS

Cream

FRUITING

March-April

PROPAGATION TECHNIQUE

seed

YEAR NATURALISED

1896

ORIGIN

South America

REASON FOR INTRODUCTION

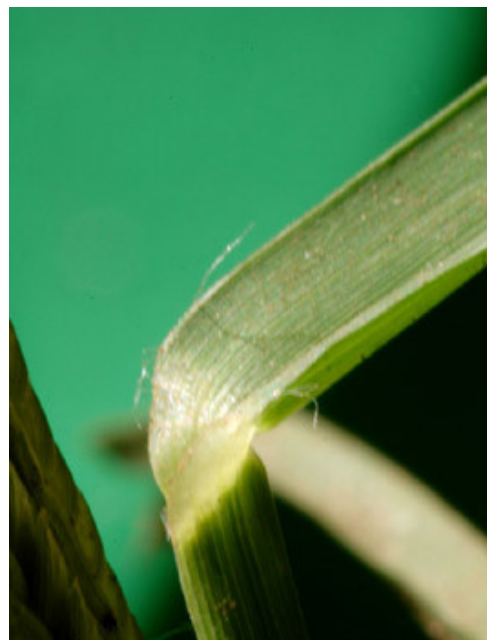
Perhaps a grass seed contaminant

MORE INFORMATION

<https://www.nzpcn.org.nz/flora/species/eleusine-tristachya/>



Hastings. Feb 2004. Photographer: Colin C. Ogle, Licence: CC BY-NC.



Leaf base, sheath, ligule (few long hairs); in new-laid lawn, Queens Park, Whanganui. Photographer: Colin C. Ogle, Date taken: 09/02/2017, Licence: CC BY-NC.