

Trapeliopsis granulosa

SYNONYMS

Lecidea granulosa, *Verrucaria granulosa*

FAMILY

Trapeliaceae

AUTHORITY

Trapeliopsis granulosa (Hoffm.) Lumbsch

FLORA CATEGORY

Lichen – Native

ENDEMIC TAXON

No

ENDEMIC GENUS

No

ENDEMIC FAMILY

No

STRUCTURAL CLASS

Lichens - Crustose

CURRENT CONSERVATION STATUS

2018 | Not Threatened | Qualifiers: SO

BRIEF DESCRIPTION

Characterised by the terricolous/corticolous habit; the whitish to pale-grey thallus of crowded granular to verrucose areolae; whitish to creamish to grey-green, granular soralia; pale-pink to red-brown or piebald apothecia which are often convex and immarginate; hymenium 70–80 µm tall; asci 60–80 µm long; and ascospores 9–14 × 4–6 µm.

DISTRIBUTION

North Island: Northland (Radar Bush, Tutamoe), South Auckland (Mt Moehau Coromandel Peninsula, Mt Pirongia, Moerangi) to Wellington (Rimutaka Ranges). **South Island:** Nelson (Mt Arthur, Lake Tennyson), Canterbury (Bealey Spur, Hanmer), Otago (Loganburn Reservoir, Mt Maungatua), Southland. **Stewart Island.**

Known also from Great Britain, Europe, Scandinavia, Greenland, Morocco, Turkey, the Ukraine, North America, Argentina, the Falkland Islands, the Antarctic Peninsula and Australia.

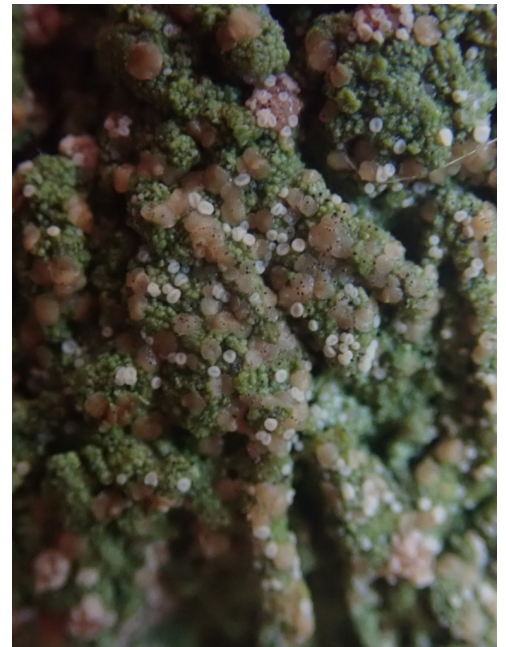
HABITAT

A primary coloniser on soil or rotting stumps or plant debris; spreading in patches 5–10 cm diam. Associating with *Neophyllis melacarpa*, *Placynthiella uliginosa* and *Trapeliopsis congregans*.

Mainly in forested areas along tracks, roads or in cut-over areas or regenerating areas devastated by fire, on decorticated stumps, also in damp, subalpine to high-alpine grassland.



On *Cyathea* stump, Tutamoe Far North.
Photographer: Marley Ford, Date taken:
29/04/2021, Licence: CC BY-NC.



On *Cyathea* stump, Tutamoe Far North.
Photographer: Marley Ford, Date taken:
29/04/2021, Licence: CC BY-NC.

DETAILED DESCRIPTION

Thallus minutely granular-verrucose, dark green (in shade) to pale greenish-grey or fawnish, often with yellow-green or yellow-brown or rust-red soralia when sterile. **Apothecia** common, crowded (giving thallus a pinkish or orange tinge), sessile, 0.01-0.5 mm diam., disc plane to convex, orange-pink to pale pink or brown, proper margin pale, entire, persistent. **Hymenium** colourless, 70-90 µm tall. **Hypothecium** olive to red-brown. **Ascospores** ellipsoid, 8-13 × 4-6 µm.

Chemistry: Thallus and soralia C+ red (fading fast); containing gyrophoric acid.

SIMILAR TAXA

Similar to *lcmadophila ericetorum*, whose presence is doubtful in New Zealand.

SUBSTRATE

Terricolous, corticolous

ATTRIBUTION

Fact sheet prepared by Marley Ford (24 February 2022). Brief description, Distribution, Habitat, Features, and Similar taxa sections copied from Galloway (1985, 2007).

REFERENCES AND FURTHER READING

- Galloway D.J. 1985: *Flora of New Zealand: Lichens*. Wellington: PD Hasselberg, Government Printer. 662 pp.
Galloway D.J. 2007: *Flora of New Zealand: Lichens, including lichen-forming and lichenicolous fungi*. 2nd edition. Lincoln, Manaaki Whenua Press. 2261 pp.

MORE INFORMATION

<https://www.nzpcn.org.nz/flora/species/trapeliopsis-granulosa/>